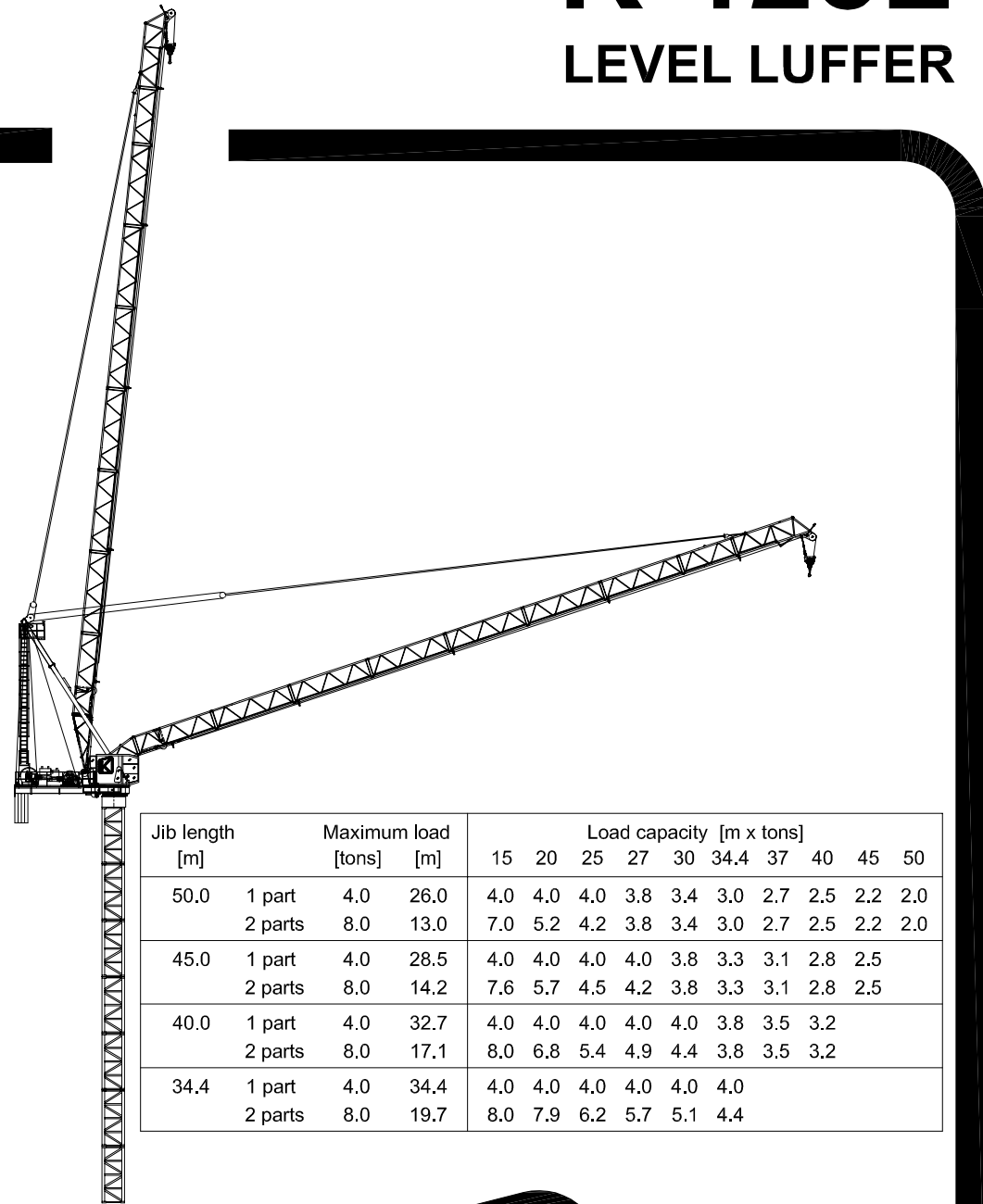
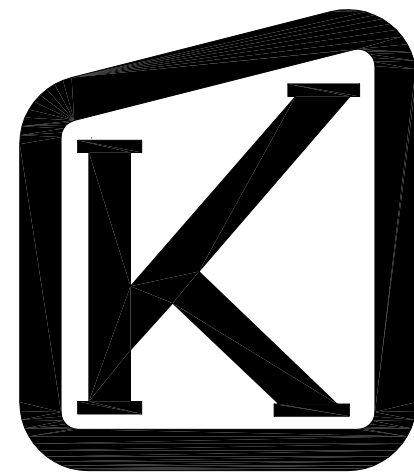


# TECHNICAL DATA

# K-125L LEVEL LUFFER



Jib length [m]	Maximum load [tons]	Maximum load [m]	Load capacity [m x tons]										
			15	20	25	27	30	34.4	37	40	45	50	
50.0	1 part	4.0	26.0	4.0	4.0	4.0	3.8	3.4	3.0	2.7	2.5	2.2	2.0
	2 parts	8.0	13.0	7.0	5.2	4.2	3.8	3.4	3.0	2.7	2.5	2.2	2.0
45.0	1 part	4.0	28.5	4.0	4.0	4.0	4.0	3.8	3.3	3.1	2.8	2.5	
	2 parts	8.0	14.2	7.6	5.7	4.5	4.2	3.8	3.3	3.1	2.8	2.5	
40.0	1 part	4.0	32.7	4.0	4.0	4.0	4.0	4.0	3.8	3.5	3.2		
	2 parts	8.0	17.1	8.0	6.8	5.4	4.9	4.4	3.8	3.5	3.2		
34.4	1 part	4.0	34.4	4.0	4.0	4.0	4.0	4.0					
	2 parts	8.0	19.7	8.0	7.9	6.2	5.7	5.1	4.4				

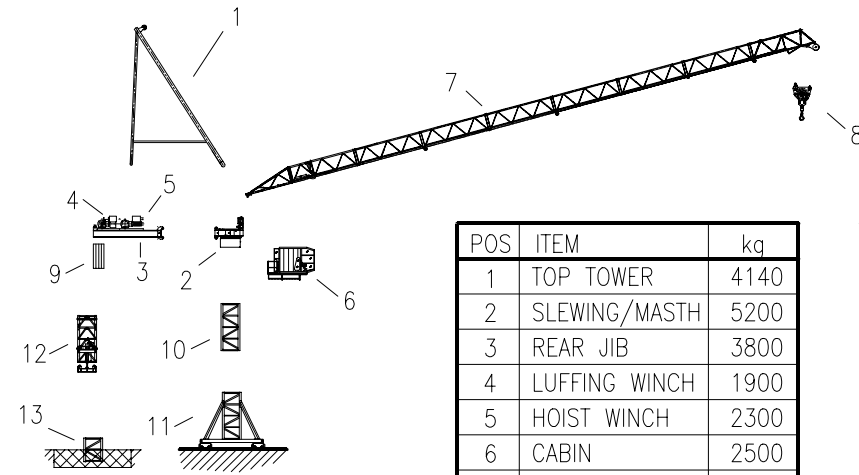


## KRØLL CRANES A/S

Nordkranvej 2 · DK-3540 Lyngby · Denmark · Phone: +45 48 187400 · Fax: +45 48 188807

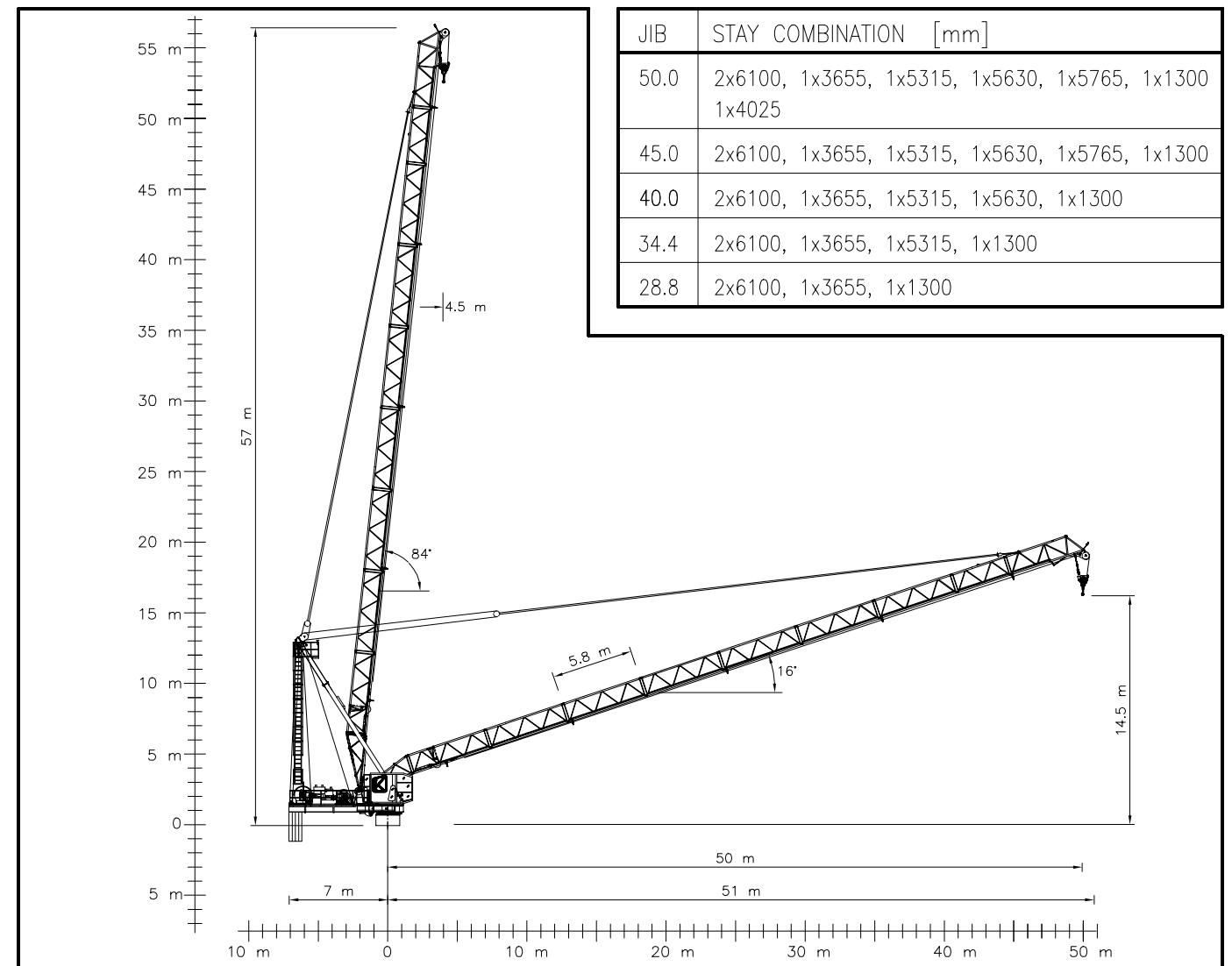
E-mail: krollcranes@krollcranes.dk · www.krollcranes.com

APPROX. ERECTION WEIGHTS  
UNGEFÄHRE MONTAGEGEWICHTE



POS	ITEM	kg
1	TOP TOWER	4140
2	SLEWING/MASTH	5200
3	REAR JIB	3800
4	LUFFING WINCH	1900
5	HOIST WINCH	2300
6	CABIN	2500
7	JIB	6440
8	HOOKE	360

POS	ITEM	kg
9	COUNTERWEIGHT	8000
10	M16-2 (4m)	2400
11	B16-2 (4m)	4000
12	CS16-2 (4m)	7000
13	N16-2 (2m)	1600
14		
15		
16		



JIB	STAY COMBINATION [mm]
50.0	2x6100, 1x3655, 1x5315, 1x5630, 1x5765, 1x1300 1x4025
45.0	2x6100, 1x3655, 1x5315, 1x5630, 1x5765, 1x1300
40.0	2x6100, 1x3655, 1x5315, 1x5630, 1x1300
34.4	2x6100, 1x3655, 1x5315, 1x1300
28.8	2x6100, 1x3655, 1x1300

### EXTRA EQUIPMENT AVAILABLE

WALL TIE FRAMES, CABLE DRUMS, CURVE RUNNING AND 90° TURN BOGIES, ELEVATOR, FLOOD LIGHTING

### ZUSÄTZLICHE AUSRÜSTUNG VERFÜGBAR

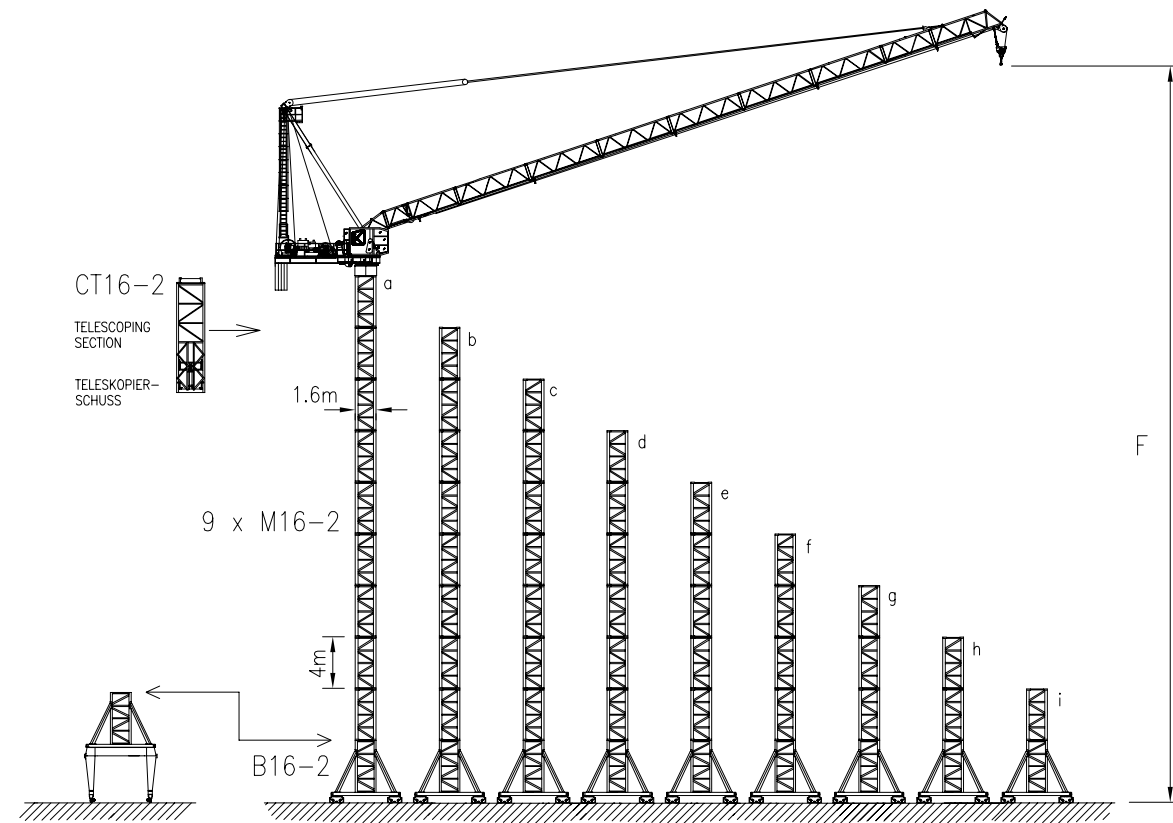
EINSPANNRAHMEN, KABELTROMMEL, KURVENFAHRENDE UND 90° DREHSCHEMEL, AUFZUG, SCHEINWERFER

THE DESIGN AND TECHNICAL SPECIFICATIONS GIVEN ARE APPLICABLE TO THE STANDARD MACHINE OF CRANE K-125L. MODIFICATIONS ACCORDING TO SPECIAL REQUIREMENTS REGARDING FOR EXAMPLE HOOK HEIGHT, JIB LENGTH, RAIL GAUGE, ETC.. ARE AVAILABLE. PLEASE CONTACT KRØLL CRANES A/S.

DIE KONSTRUKTIONS- UND TECHNISCHE DATEN BEZIEHEN SICH AUF DIE STANDARDAUSFÜHRUNG DES KRANTYPS K-125L. INDIVIDUELLE FORDERUNGEN Z.B AN HAKENHÖHE, AUSLEGERLÄNGE, SPURWEITE USW. KÖNNEN BERÜCKSICHTIGT WERDEN. NEHMEN SIE MIT KRØLL CRANES A/S KONTAKT AUF.

CONVERSION OF THE UNITS FOR FORCES UMRECHNUNG DER EINHEITEN FÜR KRÄFTE	10 N = 1 kg 10 kN = 1 ton	SUBJECT TO ALTERATIONS ÄNDERUNGEN VORBEHALTEN	F.E.M	DATA SHEET DATABLATT	K-125L 010401
---	------------------------------	--	-------	-------------------------	------------------

# K-125L ON RAILS / AUF SCHIENEN



HOOK HEIGHT / HAKENHÖHE	F	m	a	b	c	d	e	f	g	h	i
			55	51	47	43	39	35	31	27	23
RAIL GAUGE / SPURWEITE		m	6								
BALLAST	t		100	77	57	38	30	30	30	30	30
PARKING FOUNDATIONS * / PARKIERUNGSFUNDAMENTE x4	t		0	0	0	0	0	0	0	0	0
CORNER PRESSURE / ECKDRUCK	IN SERVICE / IM BETRIEB	kN	780	700	660	620	590	560	530	510	500
	OUT OF SERVICE / AUSSER BETRIEB	kN	1130	980	830	700	580	470	380	290	220

	3 x 400 V - 50 Hz 3 x 440 V - 60 Hz	CONTROL VOLTAGE / STEUER SPANNUNG 24 VDC - 220 VAC
--	--	---

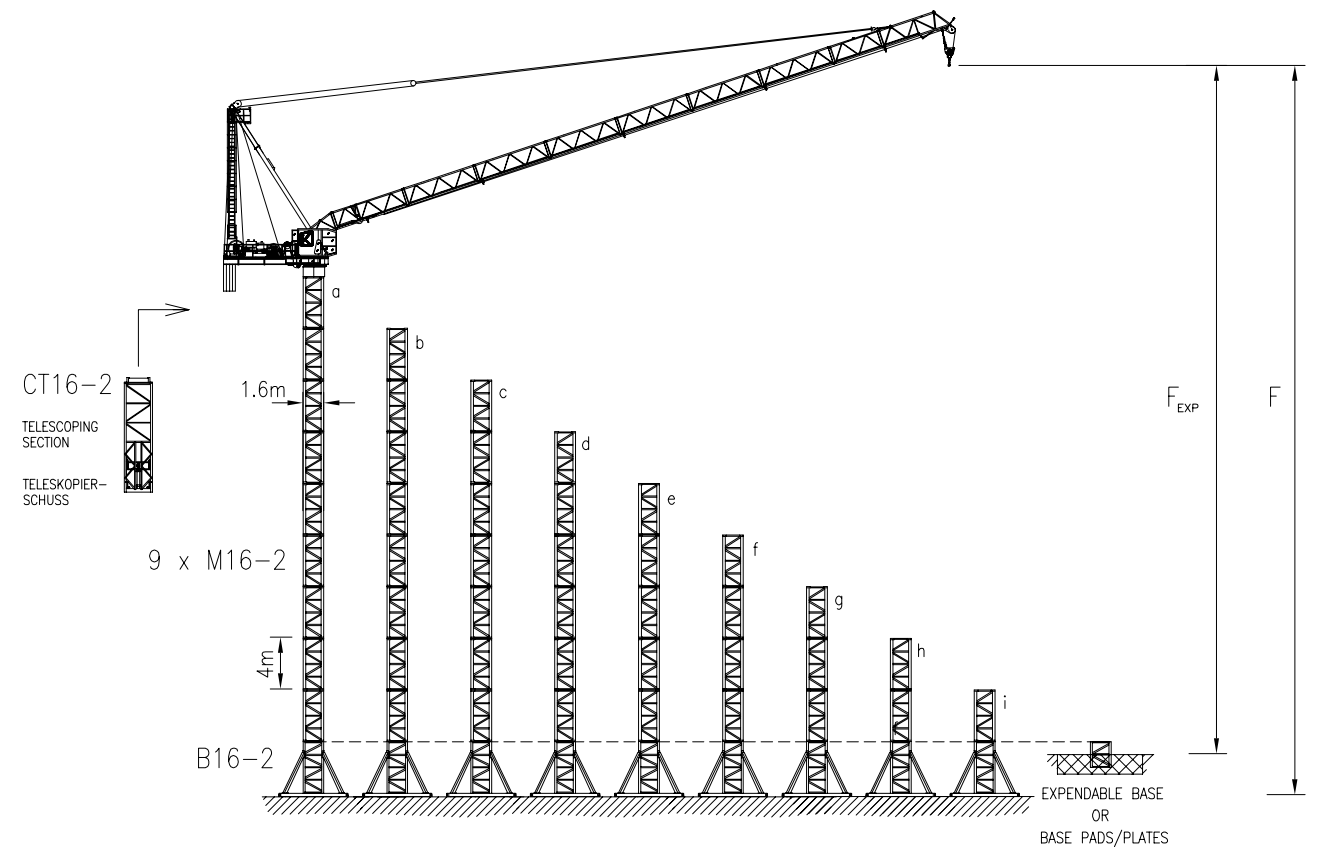
	HOIST WINCH / HUBWERK	56 kW
	POWER CONSUMPTION / STROMVERBRAUCH	150 kVA 160 Amps
	POWER CABLE / HAUPTKABEL	0-100 m: 4G70 100-175 m: 4G70 175-250 m: 4G95
	0-2000 kg	0 - 120 m/min
	0-4000 kg	0 - 70 m/min
	0-4000 kg	0 - 60 m/min
	0-8000 kg	0 - 35 m/min

	1 x 5 kW	0 - 0.7 RPM
	56 kW (standard) 37 kW (optional)	STEPLESS/STUFENLOS 1:10 min 1:30 min
	4 x 5 kW	25 m/min

HOIST ROPE / HUB-SEIL	ø18 mm - FILL FACTOR 0.65 - 1770 MPa BREAKING STRESS / BRUCHSPANNUNG
56 kW HOIST WINCH	350 m
>350 m *	
LUFFING WIRE / EINZIEHSEIL	ø18 mm - FILL FACTOR 0.65 - 1770 MPa BREAKING STRESS / BRUCHSPANNUNG

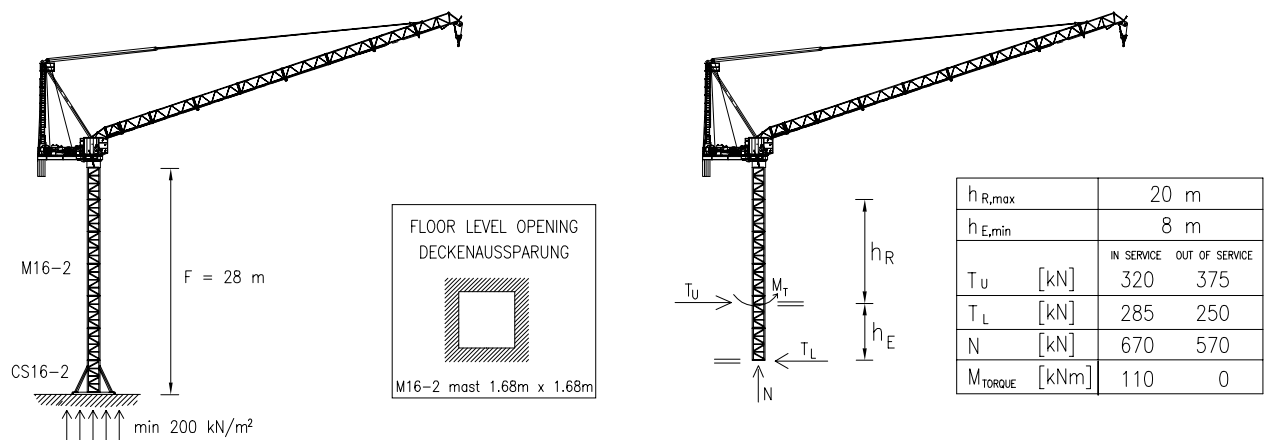
\* CONSULT KRÖLL CRANES A/S - NEHMEN SIE MIT KRÖLL CRANES A/S KONTAKT AUF

# K-125L STATIONARY / STATIONÄR



HOOK HEIGHT / HAKENHÖHE	F	m	a	b	c	d	e	f	g	h	i
			55	51	47	43	39	35	31	27	23
BALLAST	t		100	77	57	40	30	30	30	30	30
CORNER PRESSURE / ECKDRUCK	IN SERVICE / IM BETRIEB	kN	760	680	640	600	580	550	530	510	490
	OUT OF SERVICE / AUSSER BETRIEB	kN	1130	980	830	700	580	470	380	290	220
FOUNDATION WEIGHT / FUNDAMENTSGEWICHT	F	m	55	51	47	43	39	35	31	27	23
	B	m	8.0	7.6	7.2	7.0	7.0	7.0	7.0	7.0	7.0
	F_EXP	m	52	48	44	40	36	32	28	24	20
	B	m	7.3	7.0	6.6	6.2	5.8	5.4	5.4	5.3	5.3
		ton	153	138	124	117	117	117	117	117	117
		ton	179	165	146	129	113	98	98	94	94

# K-125L CLIMBER / KLETTERKRAN



$h_{R,max}$	20 m
$h_{E,min}$	8 m
$T_U$ [kN]	IN SERVICE: 320, OUT OF SERVICE: 375
$T_L$ [kN]	285, 250
$N$ [kN]	670, 570
$M_{TORQUE}$ [kNm]	110, 0