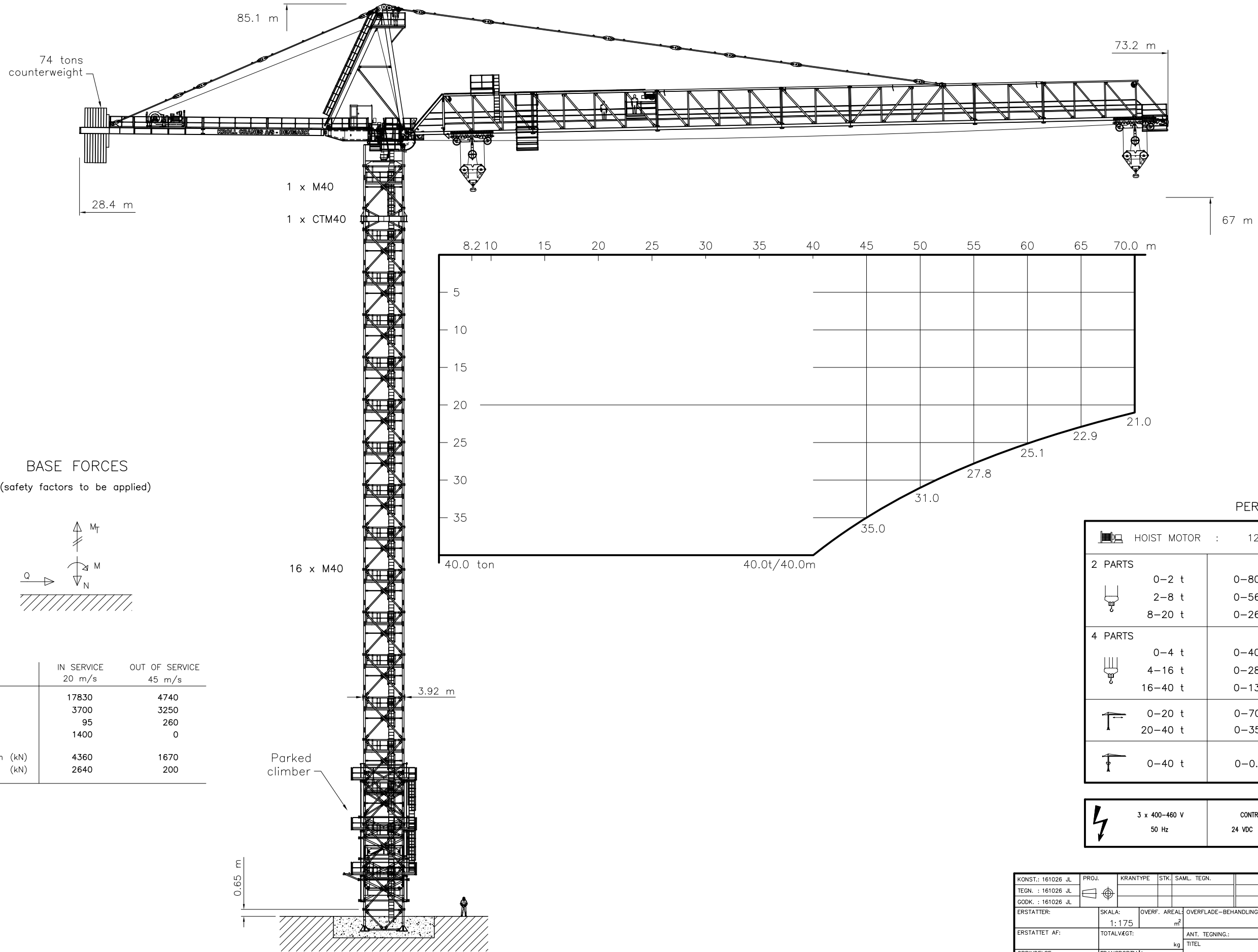


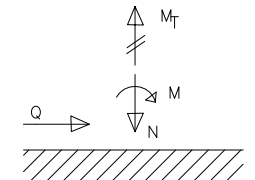
THIS DRAWING IS THE PROPERTY OF KRÖLL CRANES A/S AND MAY NOT BE REPRODUCED IN WHOLE OR PART WITHOUT PERMISSION.

# K1400

A  
B  
C  
D  
E  
F  
G



### BASE FORCES (safety factors to be applied)



Wind speed	IN SERVICE	OUT OF SERVICE
	20 m/s	45 m/s
M (kNm)	17830	4740
N (kN)	3700	3250
Q (kN)	95	260
M <sub>T</sub> (kNm)	1400	0
Corner compression (kN)	4360	1670
Corner tension (kN)	2640	200

### PERFORMANCE

HOIST MOTOR	:	120 kW
<b>2 PARTS</b>		
	0-2 t	0-80 m/min
	2-8 t	0-56 m/min
	8-20 t	0-26 m/min
<b>4 PARTS</b>		
	0-4 t	0-40 m/min
	4-16 t	0-28 m/min
	16-40 t	0-13 m/min
	0-20 t	0-70 m/min
	20-40 t	0-35 m/min
	0-40 t	0-0.5 rpm
	3 x 400-460 V 50 Hz	CONTROL VOLTAGE 24 VDC - 220 VAC

KONST.: 161026 JL	PROJ.	KRANTYPE	STK.	SAML. TEGN.
TEGN. : 161026 JL				
GODK. : 161026 JL				
ERSTATTET:	SKALA: 1:175	OVERF. AREAL: m <sup>2</sup>	OVERFLADE-BEHANDLING:	MATR.:
ERSTATTET AF:	TOTALVÆGT: kg	ANT. TEGNING: ANT. STYKL.:	TITEL	
OPRINDELSE:	TRANSPORTMÅL: m <sup>3</sup>	K1400-70 Kuwait Sports College Project		
		TEGN. NR. C1-00.00091268-00		
KRÖLL CRANES A/S NORDKRANVEJ 2 3540 LYNØE DENMARK PHONE: +45 48 187400 FAX: +45 48 188807 www.kröllcranes.com				