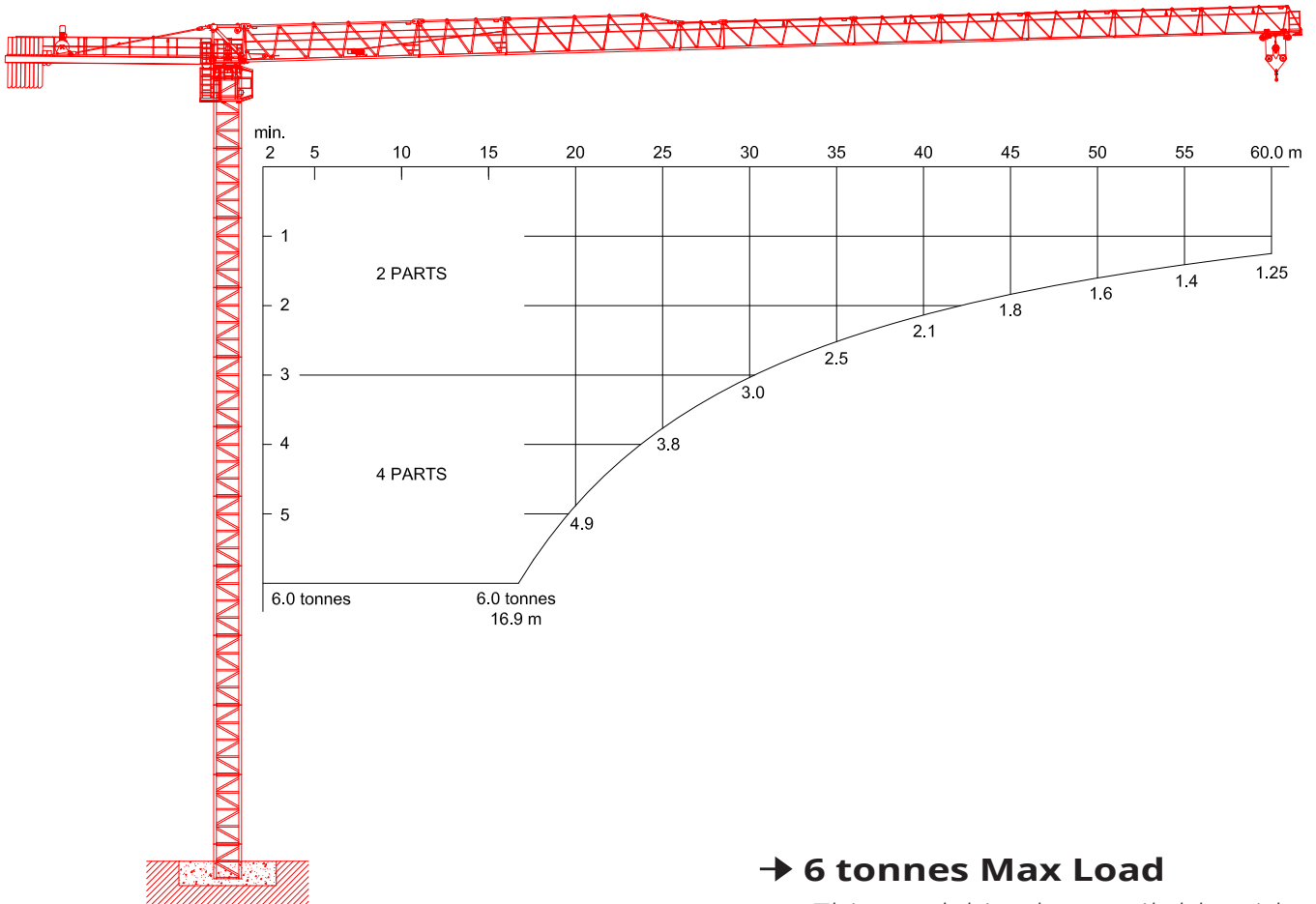




KROLL CRANES



→ **6 tonnes Max Load**

*This model is also available with:
8 tonnes Load Chart*

F.E.M 1.001-HC1/A3/E3

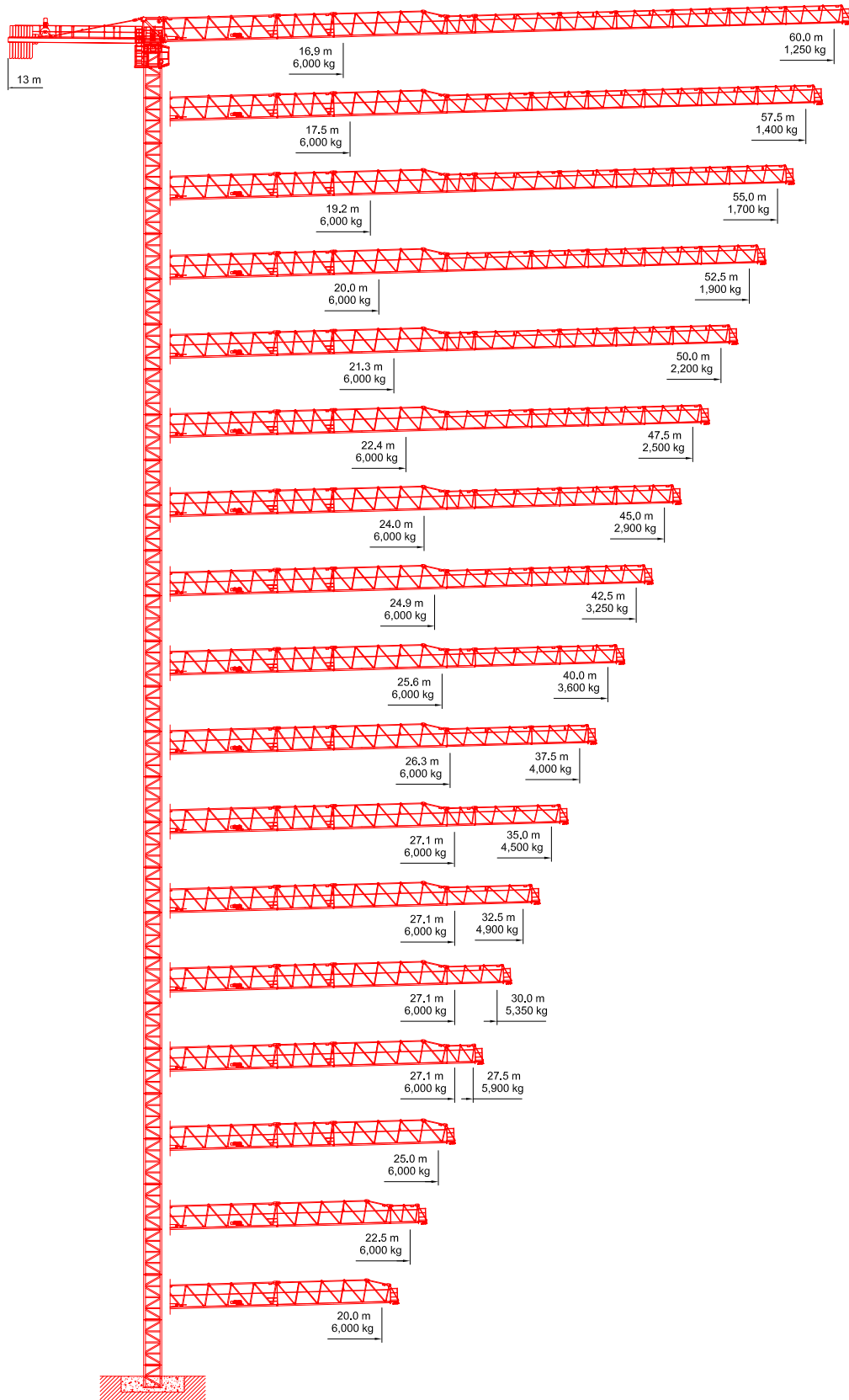


FLAT TOP TOWER CRANE

K130F

6 tonnes Max Load





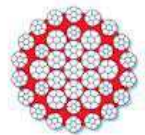


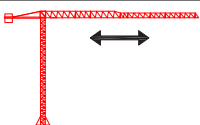


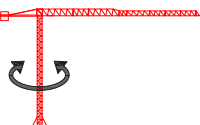


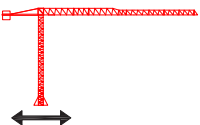
JIB CONFIGURATIONS

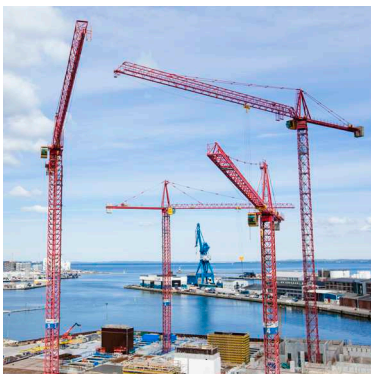




LOAD CHARTS

Radius	Jib Length															
	60.0 m		55.0 m		50.0 m		45.0 m		40.0 m		35.0 m		30.0 m		25.0 m	
	4 parts	2 parts	4 parts	2 parts	4 parts	2 parts	4 parts	2 parts	4 parts	2 parts	4 parts	2 parts	4 parts	2 parts	4 parts	2 parts
[m]	[kg]	[kg]	[kg]	[kg]	[kg]	[kg]	[kg]	[kg]	[kg]	[kg]	[kg]	[kg]	[kg]	[kg]	[kg]	[kg]
14.0	6,000	3,000	6,000	3,000	6,000	3,000	6,000	3,000	6,000	3,000	6,000	3,000	6,000	3,000	6,000	3,000
15.0	6,000	3,000	6,000	3,000	6,000	3,000	6,000	3,000	6,000	3,000	6,000	3,000	6,000	3,000	6,000	3,000
16.0	6,000	3,000	6,000	3,000	6,000	3,000	6,000	3,000	6,000	3,000	6,000	3,000	6,000	3,000	6,000	3,000
17.0	5,940	3,000	6,000	3,000	6,000	3,000	6,000	3,000	6,000	3,000	6,000	3,000	6,000	3,000	6,000	3,000
18.0	5,560	3,000	6,000	3,000	6,000	3,000	6,000	3,000	6,000	3,000	6,000	3,000	6,000	3,000	6,000	3,000
19.0	5,220	3,000	6,000	3,000	6,000	3,000	6,000	3,000	6,000	3,000	6,000	3,000	6,000	3,000	6,000	3,000
20.0	4,920	3,000	5,740	3,000	6,000	3,000	6,000	3,000	6,000	3,000	6,000	3,000	6,000	3,000	6,000	3,000
21.0	4,650	3,000	5,430	3,000	6,000	3,000	6,000	3,000	6,000	3,000	6,000	3,000	6,000	3,000	6,000	3,000
22.0	4,410	3,000	5,150	3,000	5,790	3,000	6,000	3,000	6,000	3,000	6,000	3,000	6,000	3,000	6,000	3,000
23.0	4,180	3,000	4,890	3,000	5,510	3,000	6,000	3,000	6,000	3,000	6,000	3,000	6,000	3,000	6,000	3,000
24.0	3,980	3,000	4,660	3,000	5,250	3,000	6,000	3,000	6,000	3,000	6,000	3,000	6,000	3,000	6,000	3,000
25.0	3,790	3,000	4,440	3,000	5,010	3,000	5,730	3,000	6,000	3,000	6,000	3,000	6,000	3,000	6,000	3,000
26.0	3,620	3,000	4,250	3,000	4,790	3,000	5,480	3,000	5,890	3,000	6,000	3,000	6,000	3,000		
27.0	3,460	3,000	4,060	3,000	4,580	3,000	5,250	3,000	5,650	3,000	6,000	3,000	6,000	3,000		
28.0	3,320	3,000	3,900	3,000	4,400	3,000	5,040	3,000	5,420	3,000	5,800	3,000	5,780	3,000		
29.0	3,180	3,000	3,740	3,000	4,220	3,000	4,840	3,000	5,210	3,000	5,570	3,000	5,560	3,000		
30.0	3,060	3,000	3,590	3,000	4,060	3,000	4,660	3,000	5,010	3,000	5,360	3,000	5,350	3,000		
31.0	2,940	2,940	3,460	3,000	3,910	3,000	4,480	3,000	4,830	3,000	5,170	3,000				
32.0	2,830	2,830	3,330	3,000	3,760	3,000	4,320	3,000	4,660	3,000	4,980	3,000				
33.0	2,720	2,720	3,210	3,000	3,630	3,000	4,170	3,000	4,500	3,000	4,810	3,000				
34.0	2,620	2,620	3,100	3,000	3,510	3,000	4,030	3,000	4,340	3,000	4,650	3,000				
35.0	2,530	2,530	2,990	2,990	3,390	3,000	3,900	3,000	4,200	3,000	4,500	3,000				
36.0	2,450	2,450	2,890	2,890	3,280	3,000	3,770	3,000	4,070	3,000						
37.0	2,360	2,360	2,800	2,800	3,170	3,000	3,650	3,000	3,940	3,000						
38.0	2,290	2,290	2,710	2,710	3,070	3,000	3,540	3,000	3,820	3,000						
39.0	2,210	2,210	2,620	2,620	2,980	2,980	3,440	3,000	3,710	3,000						
40.0	2,140	2,140	2,540	2,540	2,890	2,890	3,340	3,000	3,600	3,000						
41.0	2,080	2,080	2,470	2,470	2,810	2,810	3,240	3,000								
42.0	2,020	2,020	2,400	2,400	2,730	2,730	3,150	3,000								
43.0	1,960	1,960	2,330	2,330	2,650	2,650	3,060	3,000								
44.0	1,900	1,900	2,260	2,260	2,580	2,580	2,980	2,980								
45.0	1,840	1,840	2,200	2,200	2,510	2,510	2,900	2,900								
46.0	1,790	1,790	2,140	2,140	2,440	2,440										
47.0	1,740	1,740	2,080	2,080	2,380	2,380										
48.0	1,700	1,700	2,030	2,030	2,310	2,310										
49.0	1,650	1,650	1,970	1,970	2,260	2,260										
50.0	1,610	1,610	1,920	1,920	2,200	2,200										
51.0	1,560	1,560	1,880	1,880												
52.0	1,520	1,520	1,830	1,830												
53.0	1,480	1,480	1,780	1,780												
54.0	1,450	1,450	1,740	1,740												
55.0	1,410	1,410	1,700	1,700												
56.0	1,380	1,380														
57.0	1,340	1,340														
58.0	1,310	1,310														
59.0	1,280	1,280														
60.0	1,250	1,250														

HOIST WINCH MOTOR 22 kW	2-PARTS 		4-PARTS 		
		Load 0 - 0.8 t 0.8 - 1.5 t 1.5 - 3.0 t	Max. Speed 96 m/min 66 m/min 36 m/min	Load 0 - 1.6 t 1.6 - 3.0 t 3.0 - 6.0 t	Max. Speed 48 m/min 33 m/min 18 m/min
	HOIST DRUM CAPACITY 600 m / 7 layers			HOIST WIRE Diameter 12 mm Safety Factor 5 MBL 100 kN	
	TROLLEY WINCH MOTOR 4 kW			TROLLEY DRUM CAPACITY 60 m / 1 Layer	
TROLLEY SPEEDS 			TROLLEY WIRE Diameter 7 mm Safety Factor 5 MBL 40 kN		
	SLEW DRIVE Motor 1 x 7 kW			POWER SUPPLY 400 - 480 V, 50/60 Hz	
SLEW SPEEDS 			Consumption 35 kVA Main Fuse 50 A Recommended Generator Size 100 kVA		
	UNDERCARRIAGE Motor 2 x 5.5kW			SUPPLY CABLE Cable Length 0 - 175 m Cable Type 4 x 10 mm ² 175 - 250 m 4 x 16 mm ²	
TRAVEL SPEEDS 					
All motion controls are completely stepless ensuring smooth and jerk-free operation. Creeping speed down to 0.5% of maximum speed.			All specifications shown in the tables are for the standard version of K130F. For special requirements regarding load charts or drive speeds, please contact Krøll Cranes A/S.		



KRØLL CRANES A/S
Nordkranvej 2
DK-3540 Lyngø
Denmark

Tel: +45 48 18 74 00
Mail: info@krollcranes.dk
Web: www.krollcranes.dk



**FAELLE
FAVCO**

THE MUHIBBAH GROUP 