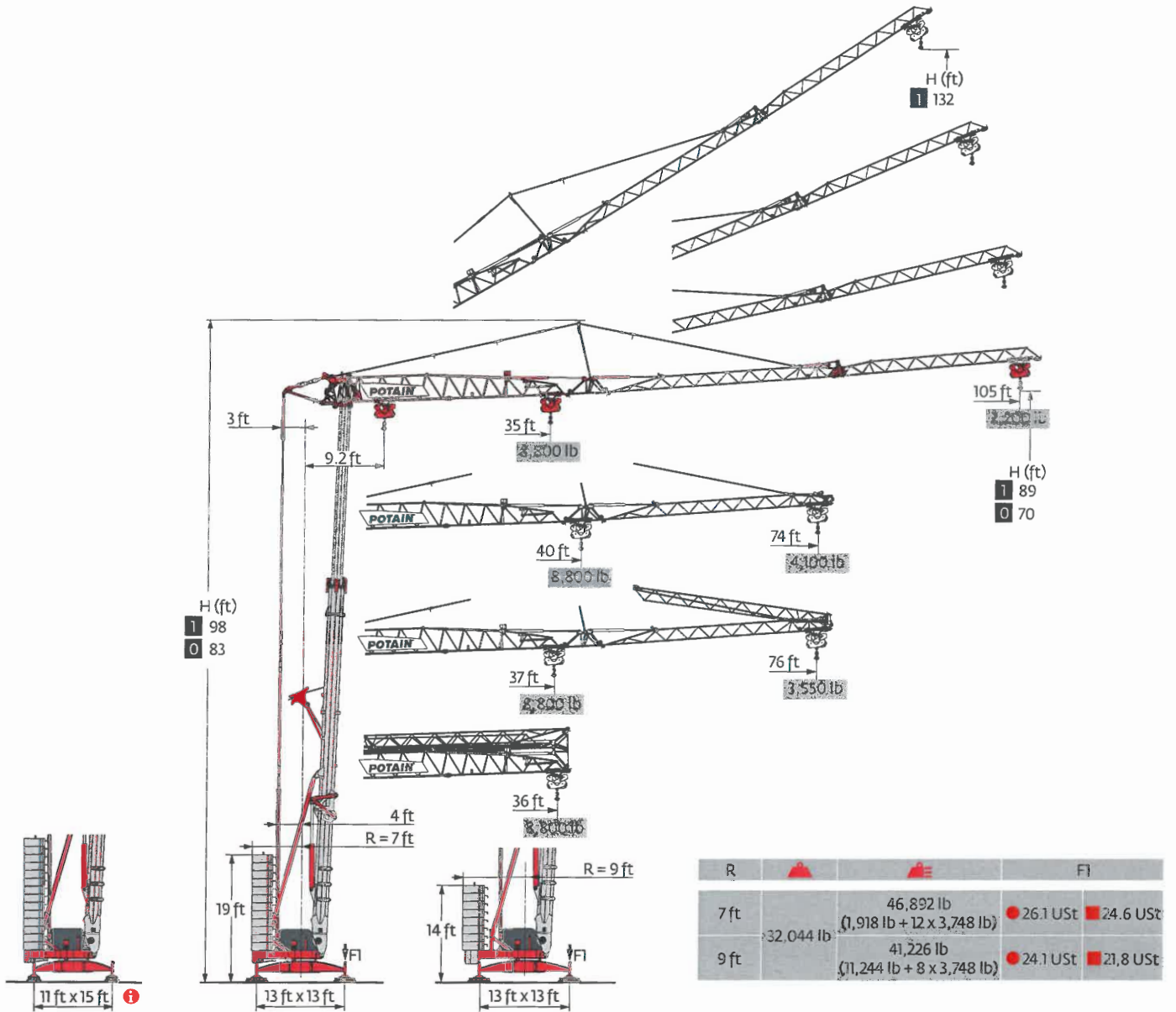
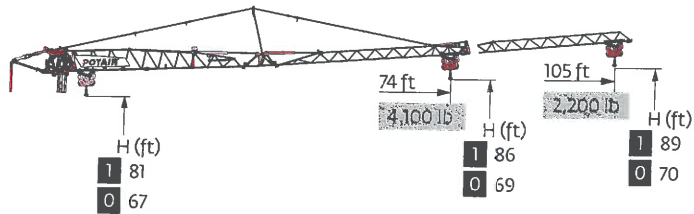
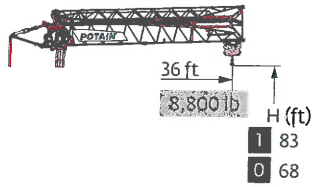


Hup 32-27

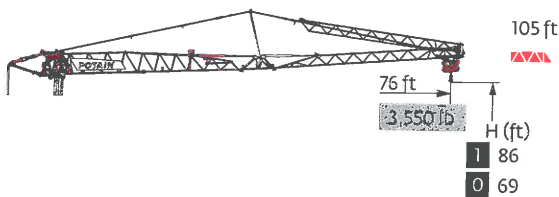


Load curves

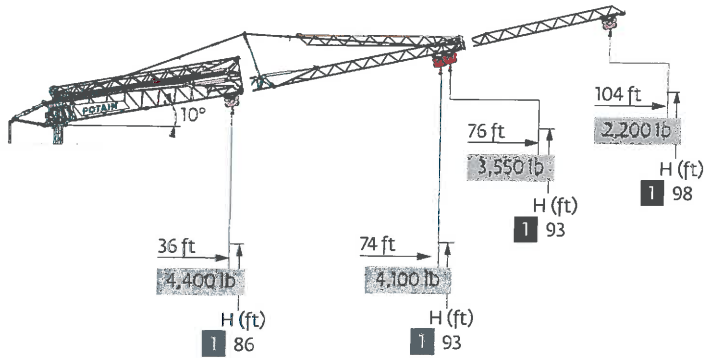


| | | | | |
|--------|-----|---|-------|----|
| 105 ft | 9.2 | ▶ | 36 | ft |
| ▲▲▲ | ▲ | | 8,800 | lb |
| 74 ft | 9.2 | ▶ | 36 | ft |
| ▲▲▲ | ▲ | | 8,800 | lb |

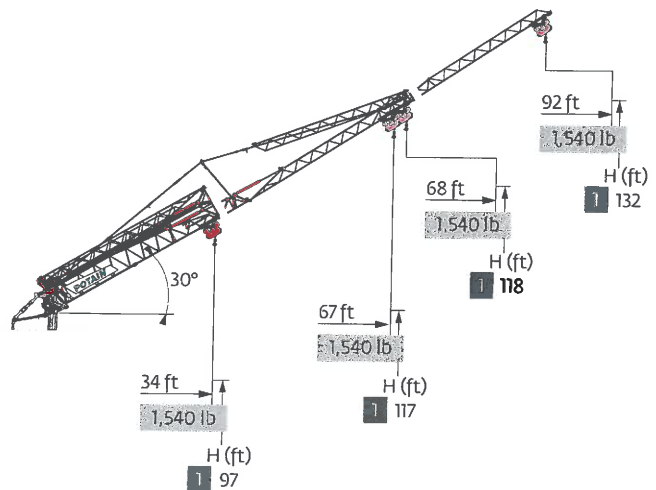
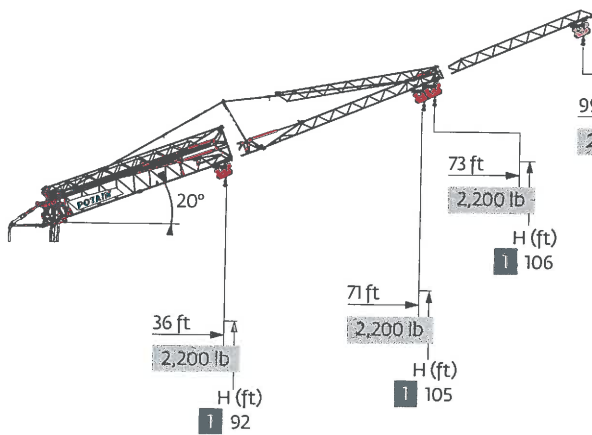
| | | | | | | | | | | | | | | | | | | |
|-----|---|-------|-------|-------|-------|-------|-------|-------|-------|-------|-------|-------|-------|-------|-------|-------|-------|----|
| 9.2 | ▶ | 35 | 36 | 39 | 43 | 46 | 49 | 52 | 56 | 59 | 62 | 66 | 72 | 82 | 89 | 98 | 105 | ft |
| | | 8,800 | 8,550 | 7,650 | 6,900 | 6,300 | 5,800 | 5,350 | 4,950 | 4,600 | 4,300 | 4,050 | 3,600 | 3,050 | 2,750 | 2,400 | 2,200 | lb |
| 9.2 | ▶ | | 40 | 43 | 46 | 49 | 52 | 56 | 59 | 62 | 66 | 74 | ft | | | | | |
| | | | 8,800 | 8,100 | 7,400 | 6,800 | 6,250 | 5,800 | 5,450 | 5,100 | 4,750 | 4,100 | lb | | | | | |



| | | | | | | | | | | | | | | |
|-----|---|-------|-------|-------|-------|-------|-------|-------|-------|-------|-------|-------|-------|----|
| 9.2 | ▶ | 37 | 39 | 43 | 46 | 49 | 52 | 56 | 59 | 62 | 66 | 72 | 76 | ft |
| | | 8,800 | 8,050 | 7,300 | 6,650 | 6,100 | 5,650 | 5,250 | 4,850 | 4,550 | 4,250 | 3,800 | 3,550 | lb |







| | | | | | | | | | | | |
|-----------|-----|---|-------|-------|-------|-------|-------|-------|-------|-------|----|
| 105 ft | 9.2 | ▶ | 60 | 62 | 66 | 72 | 82 | 89 | 98 | 104 | ft |
| ▲▲▲ | ▲ | | 4,400 | 4,250 | 4,000 | 3,550 | 3,000 | 2,700 | 2,350 | 2,200 | lb |
| 74 ft | 9.2 | ▶ | | 69 | 72 | 74 | ft | | | | |
| ▲▲▲ | ▲ | | | 4,400 | 4,200 | 4,100 | lb | | | | |
| 105 ft | 9.2 | ▶ | 63 | 66 | 72 | 76 | ft | | | | |
| ▲▲▲ | ▲ | | 4,400 | 4,250 | 3,750 | 3,550 | lb | | | | |
| 105-74 ft | 9.2 | ▶ | 36 | ft | | | | | | | |
| ▲▲▲ | ▲ | | 4,400 | lb | | | | | | | |






Hup 32-27

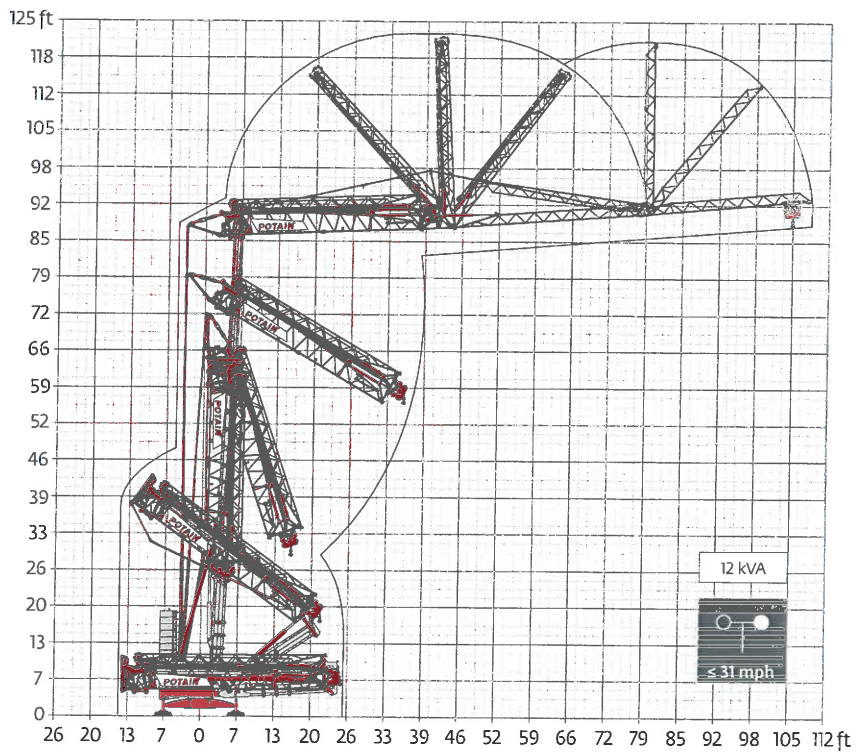
▲ For reference only. Operators manual should be consulted and adhered to.

Mechanisms

| 480 V - 60 Hz | | |  | | | | | hp | kW |
|---|-----------|-----|---|-------|-------|-------|-------|----|-----|
|  | 18 HPL 10 | fpm | 6 | 62 | 118 | 190 | 213 | 18 | 13 |
| | | lb | 8,800 | 8,800 | 4,400 | 2,200 | 1,100 | | |
|  | 3 DVF 5 | fpm | 3 → 148 (0 → 2,200 lb) 3 → 135 (2,200 lb → 8,800 lb) | | | | | 3 | 2.2 |
|  | HPS 141 | rpm | 0 → 0.9 | | | | | 5 | 3.7 |

|  IEC 60204-32 |  kVA |  |
|--|---|---|
| 480 V(+6% -10%) 60 Hz | 19 → 13 kVA | |

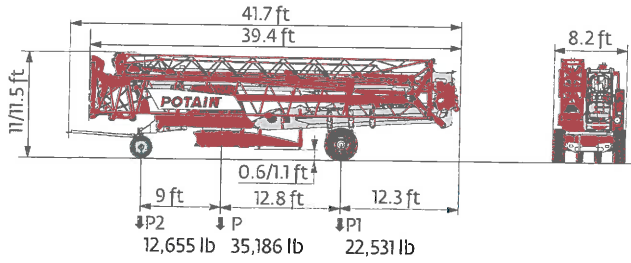
Erection



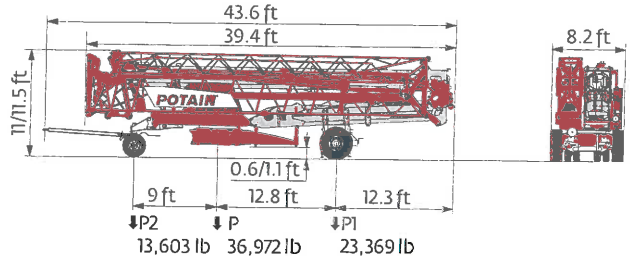
▲ For reference only. Operators manual should be consulted and adhered to.
 Hub 32-27

Transport

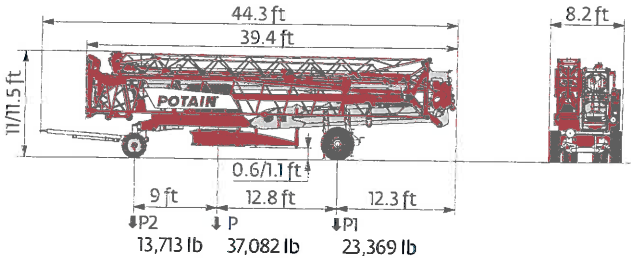
DS62/S120 - 6 mph



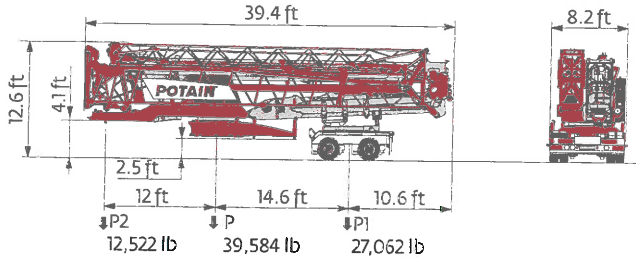
DJ105/S125 - 15.5 mph



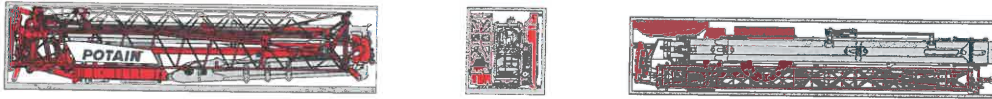
DJ126M/S125 - 15.5 mph



North America Highway Axle



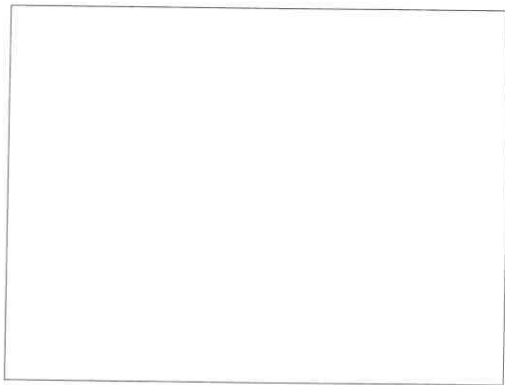
Container High Cube 40'



- R Rear slewing radius
- i Consult us
- Reactions in service
- Reactions out of service
- ▲ Weight without load, without ballast, without transport axes, with max. jib and standard height
- Total ballast weight
- Standard equipment
- Options
- Hoisting
- ▶ Trolleying
- Slewing
- kVA Required power

Power Control Function: winch speeds adapted to the available power

This commercial document is not legally binding. For any technical information, please refer to the corresponding instructions.



Hup 32-27



© 2016 The Manitowoc Company, Inc.
 For reference only. Operators manual should be consulted and adhered to.
 www.manitowoc.com
 Ref. 02D-ASME-Hup32-27-2016-01-2