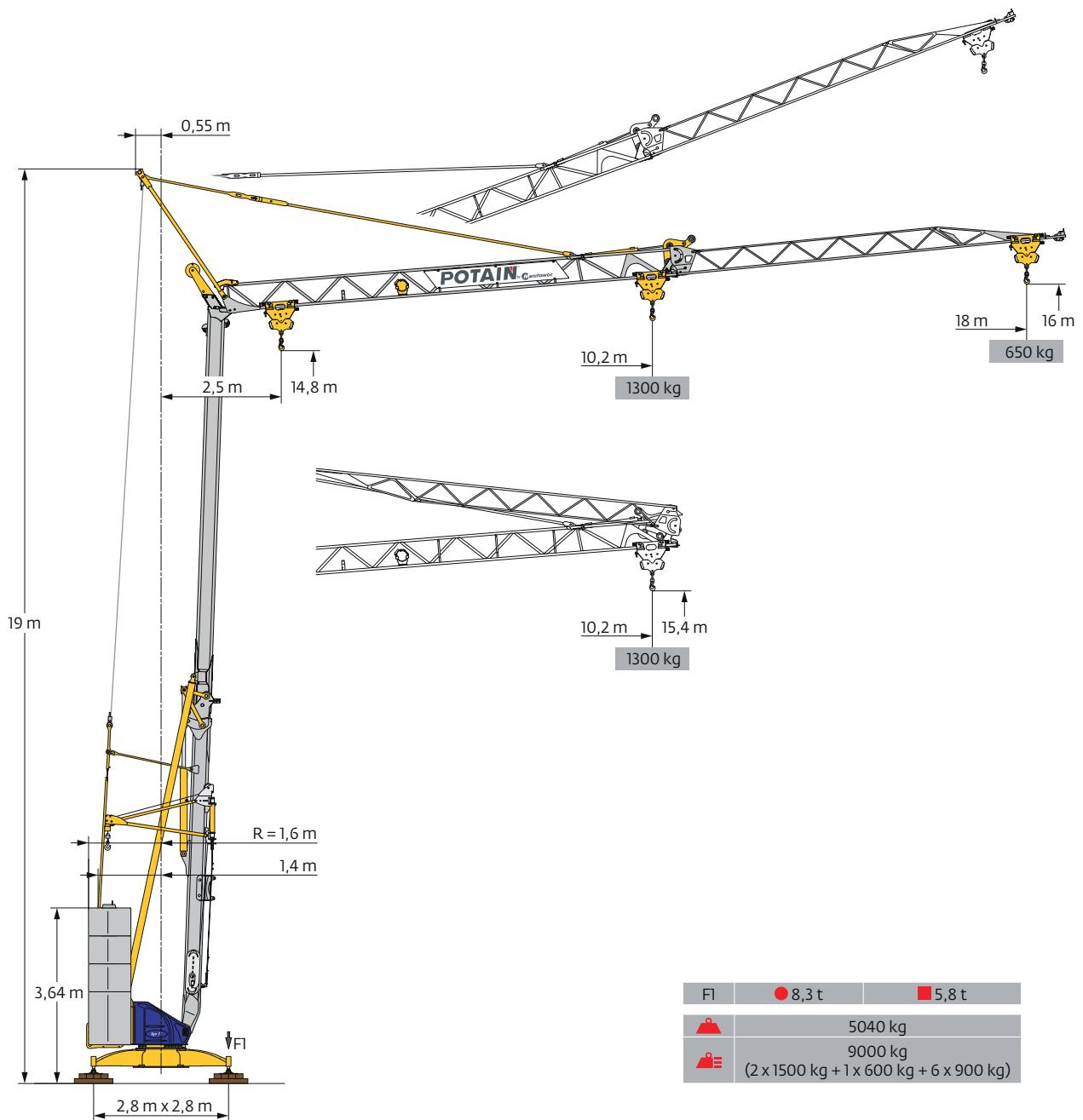
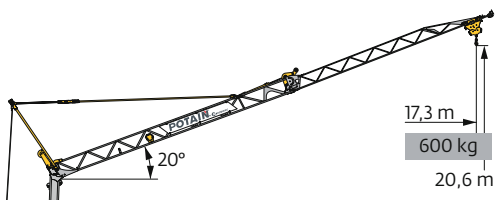
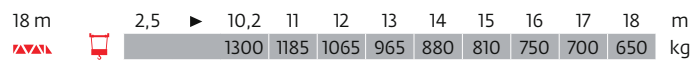
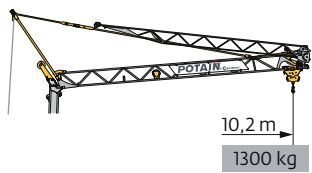


Igo 11









Courbes de charges / Lastkurven / Load curves / Curvas de cargas / Curve di carico
 Curvas de carga / Кривые нагрузок



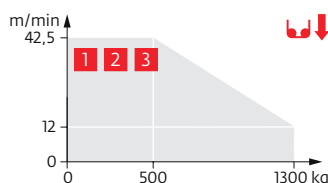
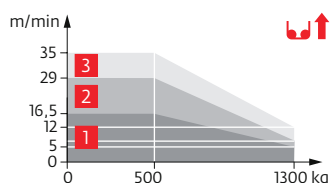
▲ For reference only. Operators manual should be consulted and adhered to.

Mécanismes / Triebwerke / Mechanisms / Mecanismos / Meccanismi
Mecanismos / Механизмы

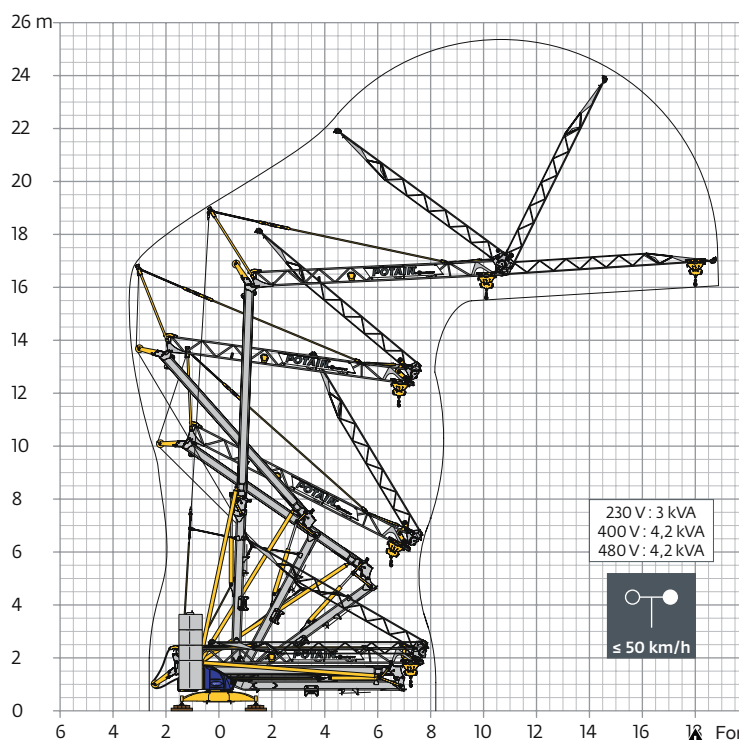
| 230 V - 50 Hz 400 V - 50 Hz 480 V - 60 Hz | | | |  | | | ch - PS hp | kW | |
|---|-----------------------|---------------------------|---------------------------|---|------------------------------|-----------------------------------|---------------------------------|-----|-----|
|  | 6 LVF 7 Optima | 230 V \pm 20 A 1 | m/min | \uparrow 3,5 | \uparrow 5 \downarrow 12 | \uparrow 16,5 \downarrow 42,5 | 3,3 | 2,4 | |
| | | | kg | 1300 | 1300 | 500 | | | |
| | | | 230 V \pm 32 A 2 | m/min | \uparrow 3,5 | \uparrow 7 \downarrow 12 | \uparrow 29 \downarrow 42,5 | 5,2 | 3,8 |
| | | | kg | 1300 | 1300 | 500 | | | |
| | | | 400 V 3 480 V | m/min | \uparrow 3,5 | \uparrow 12 \downarrow 12 | \uparrow 35 \downarrow 42,5 | 5,5 | 4 |
| | | | kg | 1300 | 1300 | 500 | | | |
|  | 1 D1 V3 | | m/min | 24 | | | 1,5 | 1,1 | |
|  | RVF 20 | | tr/min U/min rpm | 0 \rightarrow 1 | | | 1,5 | 1,1 | |

|  IEC 60204-32 |  kVA |
|--|---|
| 230 V (+10% -10%) 50 Hz 400 V (+10% -10%) 50 Hz 480 V (+6% -10%) 60 Hz | 230 V 20 A : 4,6 kVA 230 V 32 A : 7,4 kVA 400 V / 480 V : 9,5 kVA |

6 LVF 7 Optima

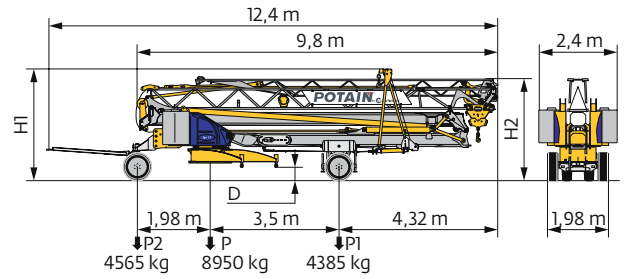
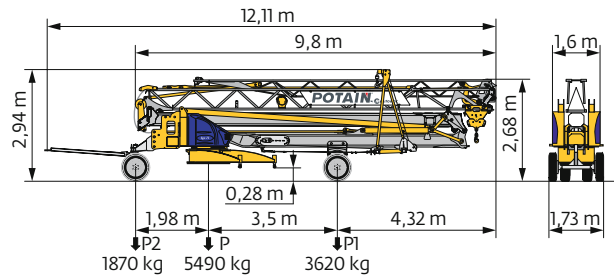


Montage / Montage / Erection / Montaje / Montaggio
Montagem / Монтаж



 For reference only. Operators manual should be consulted and adhered to.

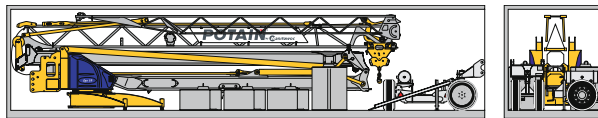
Transport / Transport / Transport / Transporte / Trasporto
Transporte / Транспортировка



| | km/h |
|-------------|----------|
| DS62/S30 | 10 |
|/..... | i |

| | km/h | D (m) | H1 (m) | H2 (m) |
|-------------|----------|----------|-----------|----------|
| DS65/S65 | 25 | 0,4/0,25 | 3,07/2,92 | 2,8/2,65 |
|/..... | i | | | |

Conteneur High Cube 40' / Container High Cube 40' / Conteneur High Cube 40' / Contenedor High Cube 40'
Container High Cube 40' / Contendor High Cube 40' / 40-футовый контейнер повышенной вместимости High Cube



FR

DE

EN

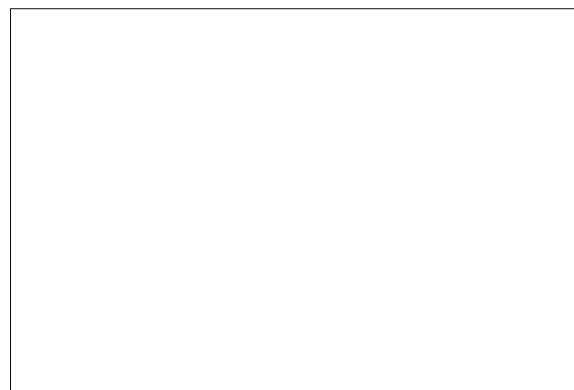
ES

IT

PT

RU

| | | | | | | | |
|------------|--|--|---|---|---|--|---|
| R | Rayon de giration | Schwenk radius | Rear slewing radius | Radio de giro | Raggio di rotazione | Raio de rotação | Задний габарит |
| i | Nous consulter | Auf Anfrage | Consult us | Consultarnos | Consultateci | Consultar-nos | Проконсультируйтесь у нас |
| • | Réactions en service | Reaktionskräfte in Betrieb | Reactions in service | Reacciones en servicio | Reazioni in servizio | Reacções em serviço | Реакция при работе |
| ■ | Réactions hors service | Reaktionskräfte außer Betrieb | Reactions out of service | Reacciones fuera de servicio | Reazioni fuori servizio | Reacções fora de serviço | Реакция в покое |
| ⚖ | Poids à vide, sans lest, sans trains de transport, avec flèche maxi. et hauteur standard. | Gewicht ohne Last, ohne Ballast, ohne Transportachsen, mit max. Auslager und Standardhöhe | Weight without load, without ballast, without transport axes, with max. jib and standard height | Peso en vacío, sin lastre, sin trenes de transporte con flecha y altura estándar | Peso a vuoto, senza zavorra, senza assali di trasporto, con braccio max e altezza standard. | Peso em vazio, sem lastro, sem eixos de transporte com lança máxima e altura standard. | Вес без груза, без балласта, без осей для транспортировки, с максимальным вылетом стрелы и стандартной высотой |
| ⚖ | Poids total du lest | Ballast-Gesamtgewicht | Total ballast weight | Peso total del lastre | Peso totale della zavorra | Peso total do lastro | Общий вес балласта |
| ⬆ | Levage | Heben | Hoisting | Elevación | Sollevamento | Elevação | Подъем |
| ⬆ | Distribution | Katzfahren | Trolleying | Distribución | Distribuzione | Distribuição | Перемещение по стреле |
| ⬆ | Orientation | Schwenken | Slewing | Orientación | Rotazione | Rotação | Поворот |
| ⚡ | 50 Hz Monophasé | 50 Hz Einphasige | 50 Hz Single phase | 50 Hz Monofasica | 50 Hz Monofase | 50 Hz monofásica | Однофазное напряжение 50Hz |
| kVA | Puissance requise | Erforderliche Leistung | Required power | Potencia Necesaria | Potenza richiesta | Potência Necessária | Потребляемая мощность |
| ⚠ | Document commercial non contractuel. Pour toute information technique se référer à la notice correspondante. | Unverbindliches Vertriebsdokument. Für technische Informationen, siehe die entsprechenden Anweisungen. | This commercial document is not legally binding. For any technical information, please refer to the corresponding instructions. | Documento comercial no contractual. Para cualquier información técnica, ver la noticia correspondiente. | Documento commerciale non vincolante, per tutte le informazioni tecniche fare riferimento al catalogo istruzioni. | Documento comercial não contratual. Para qualquer informação técnica complementar consultar as respectivas instruções. | Этот коммерческий документ не является юридически обязательным. Для получения технической информации, см. соответствующие инструкции. |



© 2016 The Manitowoc Company, Inc.
For reference only. Operators manual should be consulted and adhered to.
www.manitowoc.com