

HAMMERHEAD TOWER CRANE

**Specifications:**

- ▶ Max jib length: 263 ft
- ▶ Capacity at max length: 8,598 lb
- ▶ Max capacity: 70,548 lb

WORKS FOR YOU.™

KEY

Zeichenerklärung · Légende · Leyenda · Legenda · Legenda · Условные обозначения



Hoisting · Heben · Levage · Elevación · Sollevamento · Elevação · Подъем



Trolleying · Katzfahren · Distribution · Distribución · Traslazione carrello · Distribuição · Передвижение каретки



Slewing · Schwenken · Orientation · Orientació · Rotazione · giro · Поворот



Travelling · Schienenfahren · Translation · Traslación · Traslazione · Móvel · Передвижение



Directive on noise level · Richtlinie für den Schall-Leistungspegel · Directive sur le niveau acoustique · Directiva sobre el nivel acustico ·
Direttiva sul livello acustico · Diretiva sobre nivel de ruidos · Директива по уровню шума



Consult us · Auf Anfrage · Nous consulter · Consultarnos · Consultateci · Consulte-nos · Проконсультироваться с нами



Power requirements · g eforderte Stromstärke · Puissance totale nécessaire · Potencia necesaria · Potenza totale richiesta ·
Requisitos de energia · Требования по питанию



Power supply · Stromversorgung · Alimentation · Alimentación · Alimentazione · Fonte de alimentação · Питание



In service · In Betrieb · En service · En servicio · In servizio · Em serviço · При работе



Out of service · Außer Betrieb · Hors service · Fuera de servicio · Fuori servizio · Fora de serviço · В режиме простоя



Max. under hook height · Höchste Hakenhöhe · Hauteur maxi. sous crochet · Maxima altura bajo gancho ·
Altezza max. sotto gancio · Alt. máx. sob o gancho · Макс высота крюка



Without load, without ballast, max. jib and max. height · Ohne Last und Ballast, mit Maximalausleger und Maximalhöhe ·
A vide, sans lest, avec flè he et hauteur maximum · Sin carga, sin lastre, con pluma y altura máxima · A vuoto, senza zavorra,
braccio max., altezza max. · Sem carga, sem lastro, lança máxima, altura máxima · Без груза, без балласта, на макс.
Длине вспомогательной стрелы и макс. Высоте



Counterweight · g egengewicht · Lest de contre-flè he · Lastre de contra fle ha · Zavorra controbraccio · Contrapeso ·
Противовес

C25

EN 14439-C25 out of service proof with LC1 & LC3 - wind coming from each side 100 Km/h - For different requirement please
contact us · EN 14439 - C25 außer Betrieb mit LC1 & LC3 - Wnd von jeder Seite 100 km/h - für abweichende Anforderungen
kontaktieren Sie uns bitte · EN14439 - C25 hors service avec LC1 & LC3 - vent 100km/h de chaque côté - Nous contacter
pour des caractéristiques différentes · EN 14439 - C25 fuera de servicio con LC1 & LC3 - viento de cada lado 100 km/h -
contáctenos si necesita más información · EN 14439 - C25 fuori servizio con LC1 & LC 3 - vento in ogni direzione 100 km/h -
contattateci per differenti richieste · EN 14439 - C25 fora de serviço com LC1 e LC3 - vento de cada lado 100 kmh - para
pedidos especiais, entre em contato conosco · EN14439 - C25 не совместим с LC1 & LC3 - ветровая нагрузка не более
100км/ч - для уточнения спецификаций обращайтесь, пожалуйста, к нам



TEREX®

CONTENTS

SK 575-32

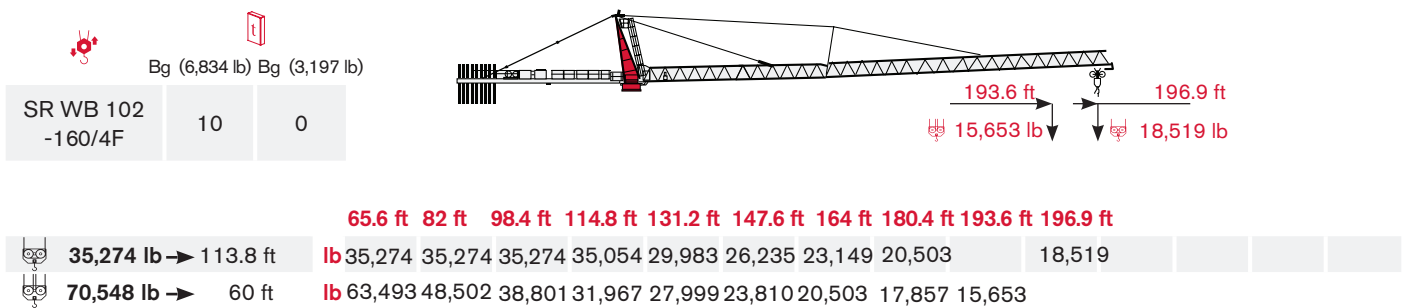
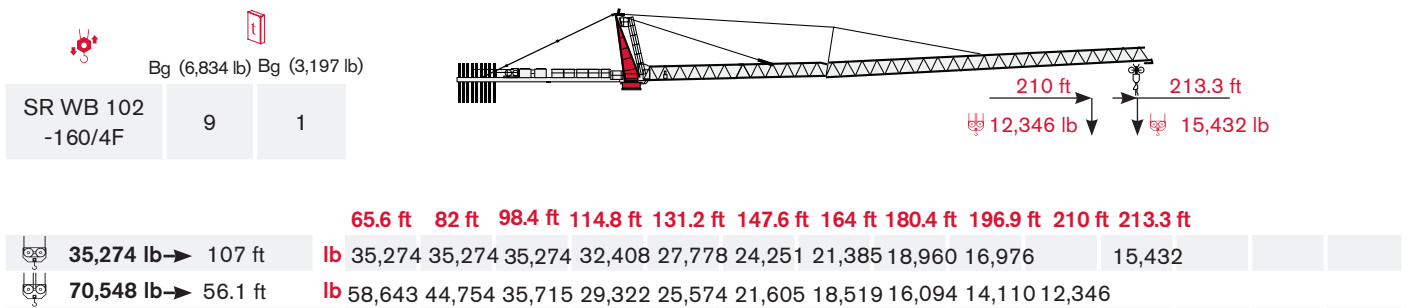
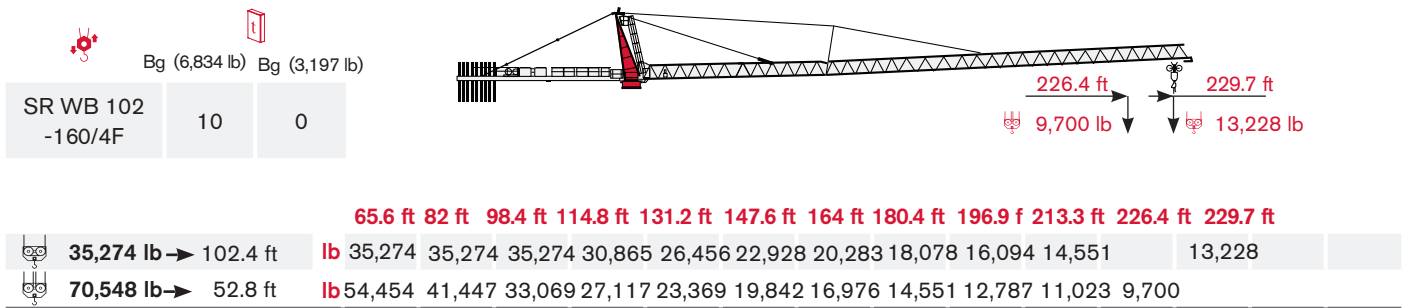
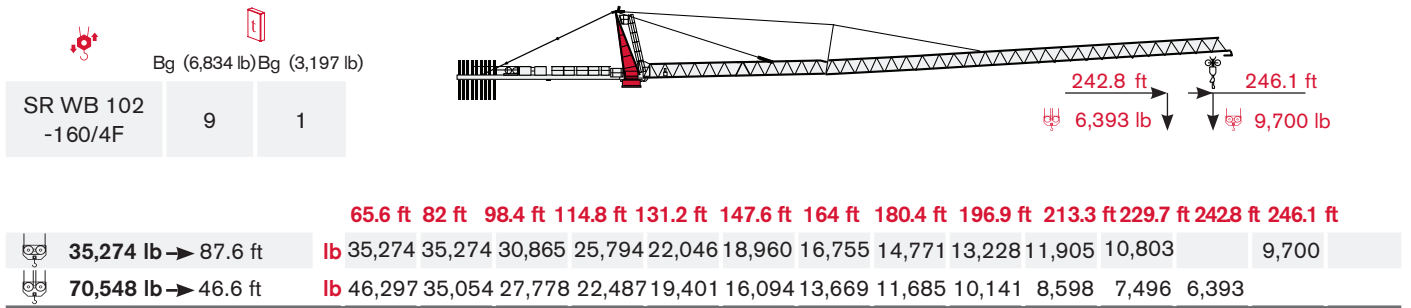
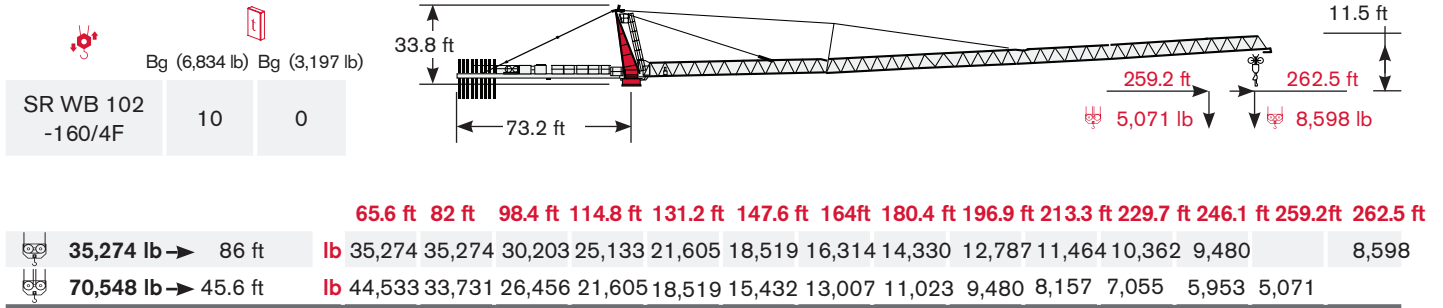
Inhalt · Contenu · Contenido · Indice · Sumário · Содержание

Page · Seite · Page · Página · Pagina · Página · Страница:

Load Diagram · Lastkurven · Courbes de charges · Curvas de cargas · Diagramma di portata · Diagrama de carga · Диаграмма грузоподъёмности	4
Tower · Turm · Tour · Torre · Torre · Башня	6
Mechanisms · Antriebe · Mécanismes · Mecanismos · Meccanismi · Mecanismo · Механизм	8
Transportation · Transport · Transport · Transporte · Trasporto · Transporte · Транспортировка	9

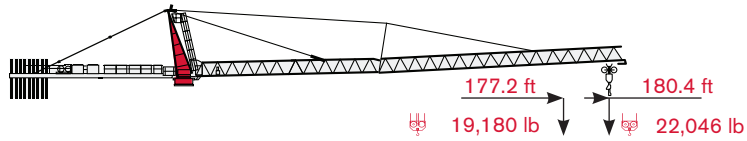
LOAD DIAGRAM

Lastkurven · Courbes de charges · Curvas de cargas · Diagramma di portata · Diagrama de carga · Диаграмма грузоподъёмности



Bg (6,834 lb) Bg (3,197 lb)

SR WB 102 -160/4F	9	0
----------------------	---	---

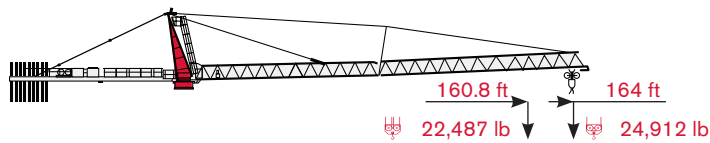


65.6 ft 82 ft 98.4 ft 114.8 ft 131.2 ft 147.6 ft 164 ft 177.2 ft 180.4 ft

35,274 lb →	120.4 ft	lb	35,274	35,274	35,274	35,274	31,967	27,999	24,692	22,046				
70,548 lb →	63 ft	lb	67,241	51,368	41,226	34,172	29,762	25,353	22,046	19,180				

Bg (6,834 lb) Bg (3,197 lb)

SR WB 102 -160/4F	8	1
----------------------	---	---

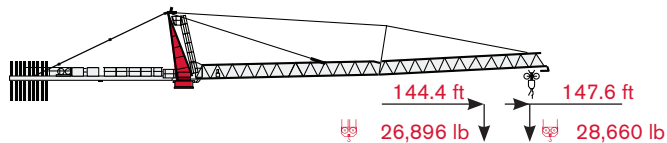


65.6 ft 82 ft 98.4 ft 114.8 ft 131.2 ft 147.6 ft 160.8 ft 164 ft

35,274 lb →	121.4 ft	lb	35,274	35,274	35,274	35,274	32,188	28,219	24,912				
70,548 lb →	64 ft	lb	68,564	52,470	42,108	34,833	30,424	26,015	22,487				

Bg (6,834 lb) Bg (3,197 lb)

SR WB 102 -160/4F	8	0
----------------------	---	---

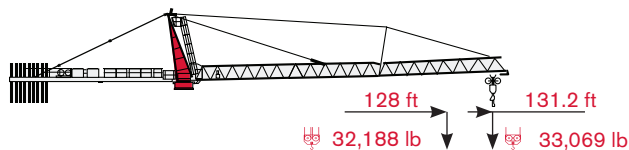


65.6 ft 82 ft 98.4 ft 114.8 ft 131.2 ft 144.4 ft 147.6 ft

35,274 lb →	123.4 ft	lb	35,274	35,274	35,274	35,274	32,849	28,660				
70,548 lb →	65.6 ft	lb	70,548	54,013	43,431	35,935	31,526	26,896				

Bg (6,834 lb) Bg (3,197 lb)

SR WB 102 -160/4F	7	1
----------------------	---	---



65.6 ft 82 ft 98.4 ft 114.8 ft 128 ft 131.2 ft


35,274 lb →	124 ft	lb	35,274	35,274	35,274	35,274	33,069				
70,548 lb →	66.9 ft	lb	70,548	55,336	44,533	36,817	32,188				

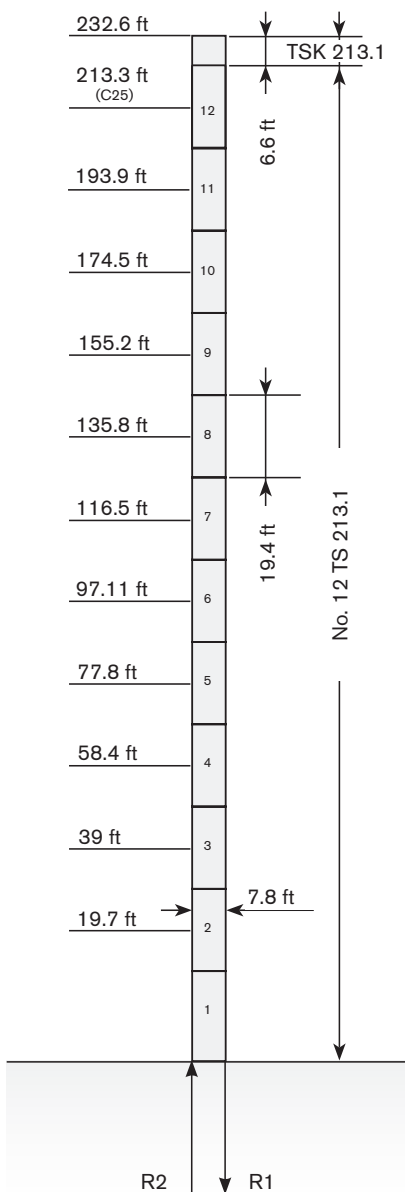
TOWER

Turn · Tour · Torre · Torre · Torre · Башня


Standard Configurations · Standardkonfiguration · Standard Implantations ·
 Implantaciones Standard · Installazioni Standard · Configuração padrão ·
 Стандартная конфигурация крана

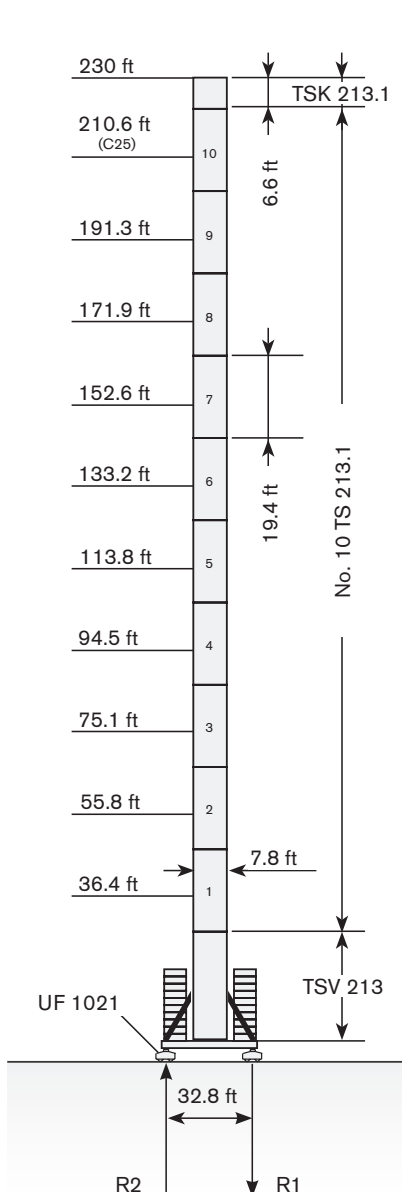
Basement: A

	●	◊
R1	-3400 kN	-3136 kN
R2	2538 kN	2431 kN
	1125 kN	




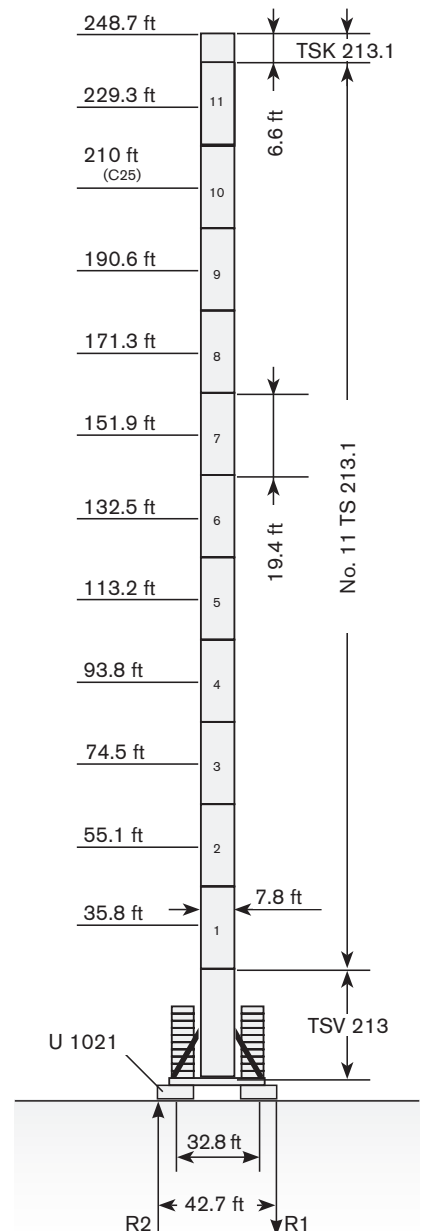
Basement: E

	●	◊
R1	-1107 kN	-1251 kN
R2	0 kN	0 kN
	1209 kN	



Basement: F

	●	◊
R1	-1110 kN	-1251 kN
R2	0 kN	0 kN
	1257 kN	



Max. under hook height · Höchste Hakenhöhe · Hauteur maxi. sous crochet · Maxima altura bajo gancho · Altezza max. sotto gancio ·
 Alt. máx. sob o gancho · Макс высота крюка

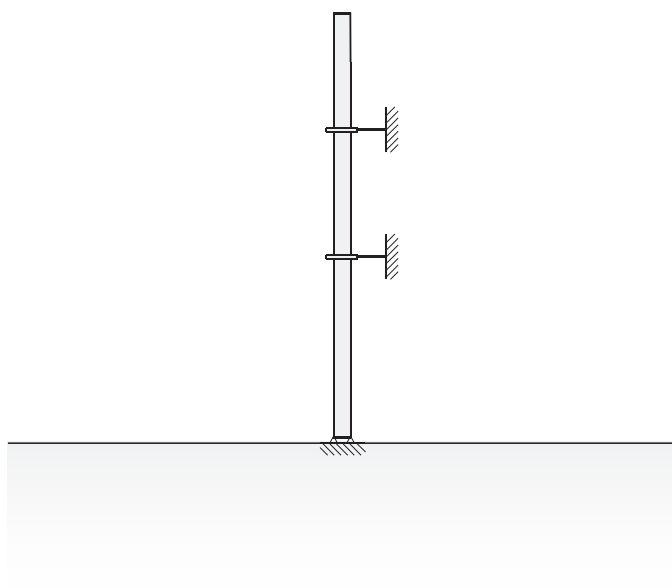
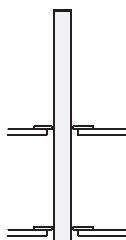
Different heights and tower combinations are available; please consult us · Andere Höhen und Turmkombinationen auf Anfrage · Différentes hauteurs et combinaisons de tour sont disponibles; nous consulter · Hay diferentes alturas y combinaciones de torre disponibles. Consúltenos · Altezze diverse e combinazioni di torre sono disponibili; consultateci · Diferentes alturas e combinações de torres disponíveis; fale conosco · Возможны другие сочетания высоты и конфигурации башни; проконсультируйтесь с нами



Other configurations · Aufstellmöglichkeiten · Autres Implantations · Otras Implantaciones · Altre Installazioni · Outras configurações · Другие конфигурации

Bottom climbing crane · Kletterkran im Gebäude · Télescopage sur dalles · Telescopage grúa trepadora · Gru climbing · Guindaste automontante interno · Самоподъемный кран

Crane tied to the structure · Geankerter Kran · Grue ancrée · Grúa anclada · Gru ancorata · Guindaste ancorado na estrutura · Кран, крепящийся к сооружению



Different heights and tower combinations are available; please consult us · Andere Höhen und Turmkombinationen auf Anfrage · Différentes hauteurs et combinaisons de tour sont disponibles; nous consulter · Hay diferentes alturas y combinaciones de torre disponibles. Consúltenos · Altezze diverse e combinazioni di torre sono disponibili; consultateci · Diferentes alturas e combinações de torres disponíveis; fale conosco · Возможны другие сочетания высоты и конфигурации башни; проконсультируйтесь с нами




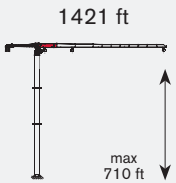

MECHANISMS

Antriebe · Mécanismes · Mecanismos · Meccanismi · Mecanismo · Механизм

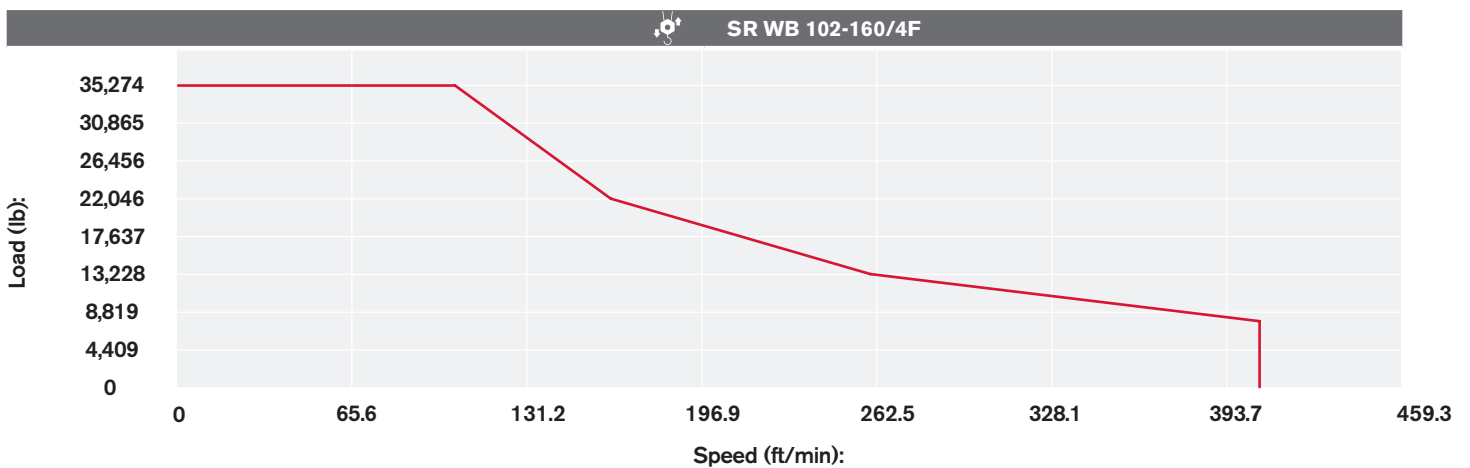
Power supply · Stromversorgung · Alimentation · Suministro eléctrico · Alimentazione · Requisitos de energia · Требования по питанию

	SR WB 102-160/4F	 170 kVA	 480V - 60Hz / 400V - 50Hz - 3 ph
---	------------------	---	--



Hoisting · Heben · Levage · Elevación · Sollevamento · Elevação · Подъем

			lb	ft/min	kW	
	SR WB 102-160/4F		35,274	0 → 105	102	
			22,046	0 → 164		
			13,228	0 → 262.5		
			7,716	0 → 413.4		
			70,548	0 → 52.5		
			44,093	0 → 85.3		
			26,456	0 → 131.2		
			15,432	0 → 206.7		

Hoisting Speed · Heben Geschwindigkeit · Vitesse de Levage · Velocidad de Elevación · Velocità di Sollevamento · Velocidade de içamento · Скорость подъема



Additional Specifications · Weitere Leistungsdaten · Spécifications additionnelles · Otras prestaciones · Altre movimentazioni · Especificações adicionais · Дополнительные спецификации

	FU 9-320/4	0 → 252.6 ft/min	1 x 9,0 kW
	K WB 120/4	0 → 0,75 min ⁻¹	2 x 100 Nm (131.2 ft - 196.9 ft) 3 x 100 Nm (213.3 ft - 262.5 ft)
	K FU 10-190/4	0 → 82 ft/min	4 x 7,5 kW

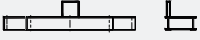

TRANSPORTATION

SK 575-32





Transport · Transport · Transporte · Trasporto · Transporte · Транспортировка

Packing list


Undercarriage

SK 575-32	DESCRIPTION · BESCHREIBUNG · DESCRIPTION · DESCRIPCIÓN · DESCRIZIONE · DESCRIÇÃO · ОПИСАНИЕ	LENGTH · LÄNGE · LONGUEUR · LONGITUD · LUNGHEZZA · COMPRIMENTO · ДЛИНА	WIDTH · BREITE · LARGEUR · ANCHURA · LARGHEZZA · LARGURA · ШИРИНА	HEIGHT · HÖHE · HAUTEUR · ALTURA · ALTEZZA · ALTURA · ВЫСОТА	WEIGHT · GEWICHT · POIDS · PESO · PESO · ВЕС
	U1021 UNDERCARRIAGE	44 ft	9.5 ft	3.8 ft	26,764 lb
	TS 213 FOUNDATION ANCHOR	2 ft	2 ft	5.3 ft	847 lb

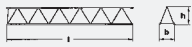
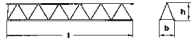

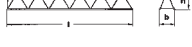
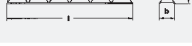

Tower

	TOWER SECTION TS 213.1	19.5 ft	7.8 ft	7.8 ft	9,789 lb
	TOWER SECTION TSV 213.1	39.4 ft	10.3 ft	10.3 ft	31,085 lb
	TOWER SECTION TSK 213	10.4 ft	8.7 ft	7.1ft	6,715 lb
	SLEWING UNIT	11.7 ft	7.1 ft	7.4 ft	22,157 lb

Cab

	CAB EVO 15	12 ft	7.2 ft	8.1 ft	3,699 lb
---	------------	-------	--------	--------	----------

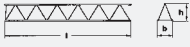
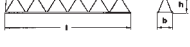



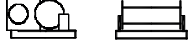






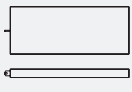
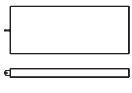
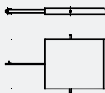
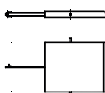
Upper Part

	JIB SECTION NO.1	39 ft	6.5 ft	7 ft	7,496 lb
	JIB SECTION NO.2	40.5 ft	6.5 ft	7.3 ft	8,863 lb
	JIB SECTION NO.3	38.8 ft	6.5 ft	7.5 ft	5,423 lb
	JIB SECTION NO.4	18.7 ft	6.5 ft	6.9 ft	5,357 lb
	JIB SECTION NO.5	35 ft	6.5 ft	6.9 ft	5,203 lb
	JIB SECTION NO.6	35.4 ft	6.5 ft	6.3 ft	4,277 lb

TRANSPORTATION

Transport · Transport · Transporte · Trasporto · Transporte · Транспортировка

Packing list

SK 575-32	DESCRIPTION · BESCHREIBUNG · DESCRIPTION · DESCRIPCIÓN · DESCRIZIONE · DESCRIÇÃO · ОПИСАНИЕ	LENGTH · LÄNGE · LONGUEUR · LONGITUD · LUNGHEZZA · COMPRIMENTO · ДЛИНА	WIDTH · BREITE · LARGEUR · ANCHURA · LARGHEZZA · LARGURA · ШИРИНА	HEIGHT · HÖHE · HAUTEUR · ALTURA · ALTEZZA · ALTEZZA · ALTURA · ВЫСОТА	WEIGHT · GEWICHT · POIDS · PESO · PESO · PESO · ВЕС
	JIB SECTION NO.7	33.5 ft	6.5 ft	6.2 ft	2,756 lb
	JIB SECTION NO.8	33.4 ft	6.5 ft	6.2 ft	1,698 lb
	JIB TIP SECTION	4.5 ft	6.6 ft	2.9 ft	661 lb
	TOWERTOP CPL	29.3 ft	7.2 ft	6.5 ft	9,326 lb
	OUTER JIB SUPPORT "A" FRAME	21.6 ft	5.7 ft	4.7 ft	562 lb
	HOIST WINCH SR WB 102-160/4F	9.2 ft	7.2 ft	4.9 ft	11,685 lb
	COUNTERJIB g 2	38.9 ft	7.4 ft	5.9 ft	7,496 lb
	COUNTERJIB g 1	31.1 ft	6.7 ft	5.6 ft	6,041 lb
	OUTER TROLLEY	6.6 ft	7.3 ft	4.6 ft	1,389 lb
	OUTER HOIST BLOCK	2.4 ft	0.5 ft	10.2 ft	1,786 lb
	INNER TROLLEY	6.6 ft	7.3 ft	4.6 ft	1,235 lb
	INNER HOIST BLOCK	2.7 ft	0.5 ft	5.1 ft	1,400 lb
	COUNTERWEI _g HT BLOCK 3.10 T	14.7 ft	0.6 ft	5.9 ft	6,834 lb
	COUNTERWEI _g HT FRAME 3.10 T	14.7 ft	0.6 ft	5.9 ft	617 lb
	COUNTERWEI _g HT BLOCK 1.45 T	10.2 ft	0.6 ft	5.9 ft	3,197 lb
	COUNTERWEI _g HT FRAME 1.45 T	10.2 ft	0.6 ft	5.9 ft	410 lb

Effective Date: June 2015.

Product specifications and prices are subject to change without notice or obligation. The photographs and/or drawings in this document are for illustrative purposes only. Refer to the appropriate Operator's Manual for instructions on the proper use of this equipment. Failure to follow the appropriate Operator's Manual when using our equipment or to otherwise act irresponsibly may result in serious injury or death. The only warranty applicable to our equipment is the standard written warranty applicable to the particular product and sale and Terex makes no other warranty, express or implied. Products and services listed may be trademarks, service marks or trade-names of Terex Corporation and/or its subsidiaries in the USA and other countries. All rights are reserved. Terex® is a registered trademark of Terex Corporation in the USA and many other countries.

gültig ab: Juni 2015.

Produktbeschreibungen und Preise können jederzeit und ohne Verpflichtung zur Ankündigung geändert werden. Die in diesem Dokument enthaltenen Fotos und/oder Zeichnungen dienen rein anschaulichen Zwecken. Anweisungen zur ordnungsgemäßen Verwendung dieser Ausrüstung entnehmen Sie bitte dem zugehörigen Betriebshandbuch. Nichtbefolgung des Betriebshandbuchs bei der Verwendung unserer Produkte oder anderweitig fahrlässiges Verhalten kann zu schwerwiegenden Verletzungen oder Tod führen. Für dieses Produkt wird ausschließlich die entsprechende, schriftlich niedergelegte Standardgarantie gewährt. Terex leistet keinerlei darüber hinaus gehende Garantie, weder ausdrücklich noch stillschweigend. Die Bezeichnungen der aufgeführten Produkte und Leistungen sind gegebenenfalls Marken, Servicemarken oder Handelsnamen der Terex Corporation und/oder ihrer Tochtergesellschaften in den USA und anderen Ländern. Alle Rechte vorbehalten. „TEREX“ ist eine eingetragene Marke der Terex Corporation in den USA und vielen anderen Ländern.

Date d'effet : Juin 2015.

Les spécifications et prix des produits sont sujets à modification sans avis ou obligation. Les photographies et/ou dessins contenus dans ce documents sont uniquement pour illustration. Veuillez vous référer à la notice d'utilisation appropriée pour les instructions quant à l'utilisation correcte de cet équipement. Tout manquement au suivi de la notice d'utilisation appropriée lors de l'utilisation de notre équipement ou tout acte autrement irresponsable peut résulter en blessure corporelle sérieuse ou mortelle. La seule garantie applicable à notre équipement est la garantie standard écrite applicable à un produit et à une vente spécifique. Terex n'offre aucune autre garantie, expresse ou implicite. Les produits et services proposés peuvent être des marques de fabrique, des marques de service ou des appellations commerciales de Terex Corporation et/ou ses filiales aux Etats Unis et dans les autres pays, et tous les droits sont réservés. «TEREX» est une marque déposée de Terex Corporation aux Etats Unis et dans de nombreux autres pays.

Fecha efectiva: Junio 2015.

Los precios y las especificaciones de productos pueden sufrir cambios sin aviso previo u obligación. Las fotografías o dibujos de este documento tienen un fin meramente ilustrativo. Consulte el manual de instrucciones del operador correspondiente para más información sobre el uso correcto de este equipo. El hecho de no respetar el manual del operador correspondiente al utilizar el equipo o actuar de forma irresponsable puede suponer lesiones graves o fatales. La única garantía aplicable a nuestro equipo es la garantía escrita estándar correspondiente a cada producto y venta, y TEREX no amplía dicha garantía de forma expresa o implícita. Los productos y servicios mencionados pueden ser marcas registradas, marcas de servicio o nombres de marca de TEREX Corporation o de sus filiales en Estados Unidos de América y otros países, y se reservan todos los derechos. „TEREX“ es una marca comercial registrada de Terex Corporation en Estados Unidos de América y muchos otros países.

Data di inizio validità: Giugno 2015.

Ci riserviamo il diritto di modificare le specifiche e i prezzi dei prodotti in ogni momento e senza preavviso. Le fotografie e/o i disegni contenuti in questo documento sono destinati unicamente a scopi illustrativi. Consultare le istruzioni sull'uso corretto di questo macchinario, contenute nell'opportuno Manuale dell'operatore. L'inottemperanza delle istruzioni contenute nel Manuale dell'operatore del macchinario e altri comportamenti irresponsabili possono provocare gravi lesioni, anche mortali. L'unica garanzia applicabile ai nostri macchinari è la garanzia scritta standard applicabile al particolare prodotto e alla particolare vendita; Terex è esonerata dal fornire qualsiasi altra garanzia, esplicita o implicita. I prodotti e servizi elencati possono essere marchi di fabbrica, marchi di servizio o nomi commerciali di TEREX Corporation e/o società affiliate negli Stati Uniti d'America e altre nazioni e tutti i diritti sono riservati. „TEREX“ è un marchio registrato di Terex Corporation negli USA e molti altri Paesi.

Data de vigência: Junho 2015.

Especificações e preços dos produtos sujeitos a alteração sem aviso prévio ou obrigações. As fotografias e/ou desenhos deste documento servem apenas para fins ilustrativos. Consulte o respectivo Manual de Instruções para instruções sobre o uso correto deste equipamento. A falta de atenção ao respectivo Manual do Operador no uso de nosso equipamento ou a operação da máquina em condições impróprias pode resultar em lesão grave ou morte. A única garantia aplicável aos nossos equipamentos é a garantia padrão por escrito, aplicável ao produto específico e à sua venda, sem que nenhuma outra, expressa ou implícita, seja oferecida pela Terex. Os produtos e serviços listados podem ser marcas comerciais, marcas de serviço ou nomes-fantasia da Terex Corporation e/ou suas subsidiárias nos EUA e em outros países. Todos os direitos reservados. Terex® é marca registrada da Terex Corporation nos EUA e muitos outros países.

Вступает в силу: Июнь 2015.

Технические характеристики и цены могут изменяться без предварительного уведомления и без каких-либо обязательств для производителя. Фотографии и (или) чертежи, использованные в документе, приведены исключительно в качестве иллюстраций. Инструкции по правилам эксплуатации даются в соответствующих руководствах для операторов данного оборудования. Невыполнение рекомендаций руководства по эксплуатации нашего оборудования или другие безответственные действия могут повлечь серьезные травмы или смерть. Единственной гарантией, действующей в отношении нашего оборудования, является стандартная форма письменной гарантии на данный тип оборудования и на условия его продажи.



Copyright 2015 Terex Corporation

Terex Cranes, Global Marketing, Dinglerstraße 24, 66482 Zweibrücken, Germany
Tel. +49 (0) 6332 830, Email: info.cranes@terex.com, www.terexcranes.com

Brochure Reference: TC-DS-M-E/F/g //S/P/R-SK575-32-06/15

www.terexcranes.com



WORKS FOR YOU.™